

NORTH BAY VISUAL RWY 18

AL-625 (FAA)

ST PETE-CLEARWATER INTL (PIE)
ST PETERSBURG-CLEARWATER, FLORIDA

ATIS 134.5
TAMPA APP CON 125.3 316.05
ST PETERSBURG-CLEARWATER TOWER ★ 118.3 (CTAF) 257.8
GND CON 121.9 348.6
CLNC DEL 120.6 350.2
UNICOM 122.95

RADAR REQUIRED

PROCEDURE NOT AUTHORIZED AT NIGHT
NOT AUTHORIZED WHEN TOWER NOT IN OPERATION

Weather Minimums: 2100 feet ceiling
and 3 miles visibility.

LAKE TARPON

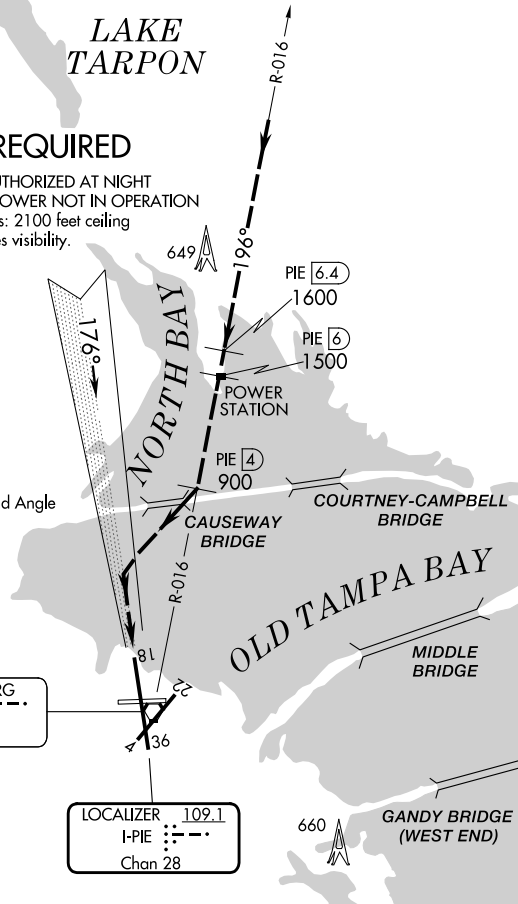
GULF OF MEXICO

Vertical Guidance Navaid and Angle
I-PIE 3.00°
PAPI Rwy 18 3.00°

ST PETERSBURG
116.4 PIE --- · · · ·
Chan 111

LOCALIZER 109.1
I-PIE --- · · ·
Chan 28

660
GANDY BRIDGE (WEST END)



SE-3, 28 NOV 2024 to 26 DEC 2024

SE-3, 28 NOV 2024 to 26 DEC 2024

1	2	3	4	5	6	7	8	9	10	11	12	13	14	15	16
---	---	---	---	---	---	---	---	---	----	----	----	----	----	----	----



NORTH BAY VISUAL APPROACH

When cleared for a NORTH BAY VISUAL APPROACH, aircraft will proceed visually from over the power station (PIE R-016, 6 DME) heading 196° direct to the Causeway Bridge, then right turn to intercept the final approach course to Rwy 18.

NORTH BAY VISUAL RWY 18

Amdt 6 29MAR18

27°55'N-82°41'W

ST PETERSBURG-CLEARWATER, FLORIDA
ST PETE-CLEARWATER INTL (PIE)