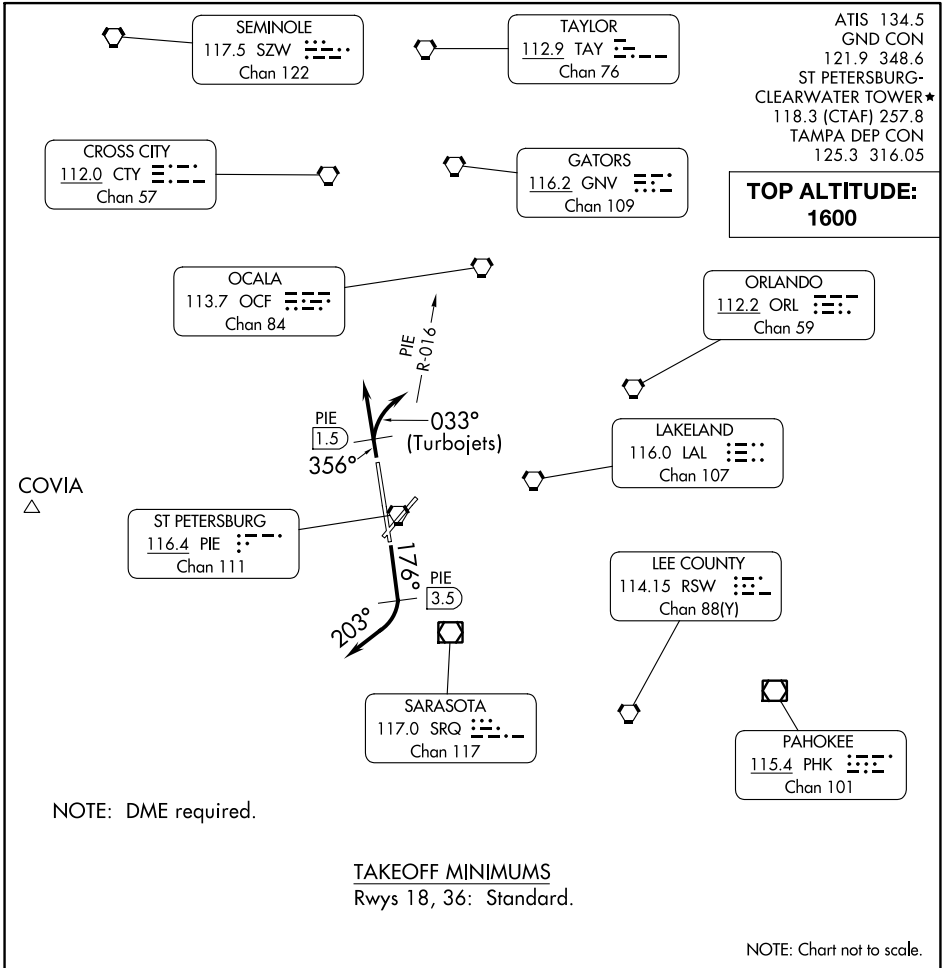


(PIE9.PIE) 24081

AL-625 (FAA)

# ST PETE NINE DEPARTURE

ST PETE-CLEARWATER INTL (PIE)  
ST PETERSBURG-CLEARWATER, FLORIDA



COVIA  
△

NOTE: DME required.

TAKEOFF MINIMUMS  
Rwys 18, 36: Standard.

NOTE: Chart not to scale.

SE-3, 28 NOV 2024 to 26 DEC 2024

SE-3, 28 NOV 2024 to 26 DEC 2024



## DEPARTURE ROUTE DESCRIPTION

**TAKEOFF RUNWAY 18:** Climb heading 176° until PIE VORTAC 3.5 DME, then turn right heading 203° or as assigned for RADAR vectors to filed/assigned route, thence. . . .

**TAKEOFF RUNWAY 36:** TURBOJETS climb heading 356° until PIE VORTAC 1.5 DME, then turn right heading 033° to intercept and fly outbound on PIE R-016, thence. . . .

**ALL OTHERS** fly heading 356° or as assigned for RADAR vectors to filed/assigned route. Thence. . . .

. . . .maintain 1600, expect further clearance to filed altitude 10 minutes after departure.

ST PETE NINE DEPARTURE  
(PIE9.PIE) 29MAR18

ST PETERSBURG-CLEARWATER, FLORIDA  
ST PETE-CLEARWATER INTL (PIE)