

LOC/DME I-ULJ <b>111.15</b> Chan <b>48(Y)</b>	APP CRS <b>293°</b>	Rwy Idg <b>7011</b> TDZE <b>128</b> Apt Elev <b>132</b>
---	------------------------	---

# ILS or LOC RWY 29

LAURENCE G HANSCOM FLD (BED)

RADAR required for procedure entry. DME or RADAR required.

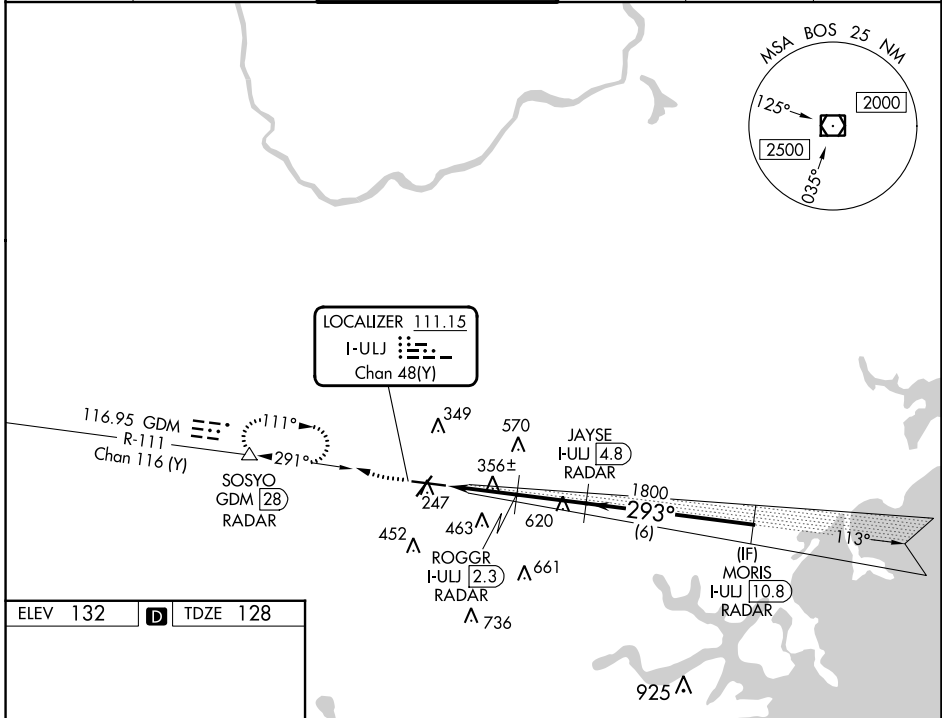
For inop ALS, increase S-LOC 29 Cats C and D to 1½ SM.

MALSR

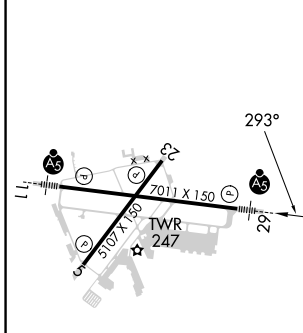


MISSED APPROACH: Climb to 1000 then climbing right turn to 2000 on GDM VOR/DME R-111 to SOSYO/GDM 28 DME/RADAR and hold.

ATIS <b>124.6</b>	BOSTON APP CON <b>124.4 279.6</b>	HANSCOM TOWER ★ <b>118.5 (CTAF) 257.2</b>	GND CON <b>121.7</b>	CLNC DEL <b>121.85</b>	UNICOM <b>122.95</b>
----------------------	--------------------------------------	--	-------------------------	---------------------------	-------------------------



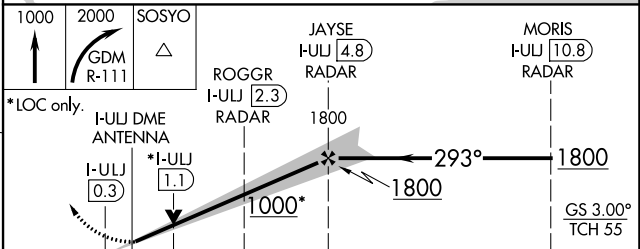
ELEV 132	D	TDZE 128
----------	---	----------



MIRL Rwy 5-23  
HIRL Rwy 11-29  
REIL Rwys 5 and 23

FAF to MAP 5.1 NM

Knots	60	90	120	150	180
Min:Sec	5:06	3:24	2:33	2:02	1:42



CATEGORY	A	B	C	D
S-ILS 29		328-½	200 (200-½)	
S-LOC 29	620-½	492 (500-½)	620-1	492 (500-1)
CIRCLING	720-1	588 (600-1)	880-2¼ 748 (800-2¼)	920-2½ 788 (800-2½)

NE-1, 28 NOV 2024 to 26 DEC 2024

NE-1, 28 NOV 2024 to 26 DEC 2024