

VOR/DME CNG 113.1 Chan 78	APP CRS 221°	Rwy Idg TDZE Apt Elev 6500 402 411
---	------------------------	--

VOR RWY 23

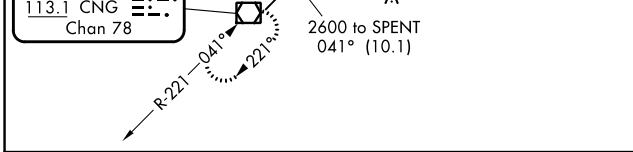
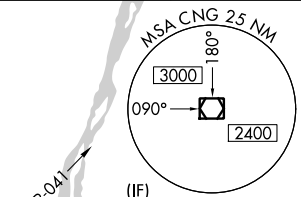
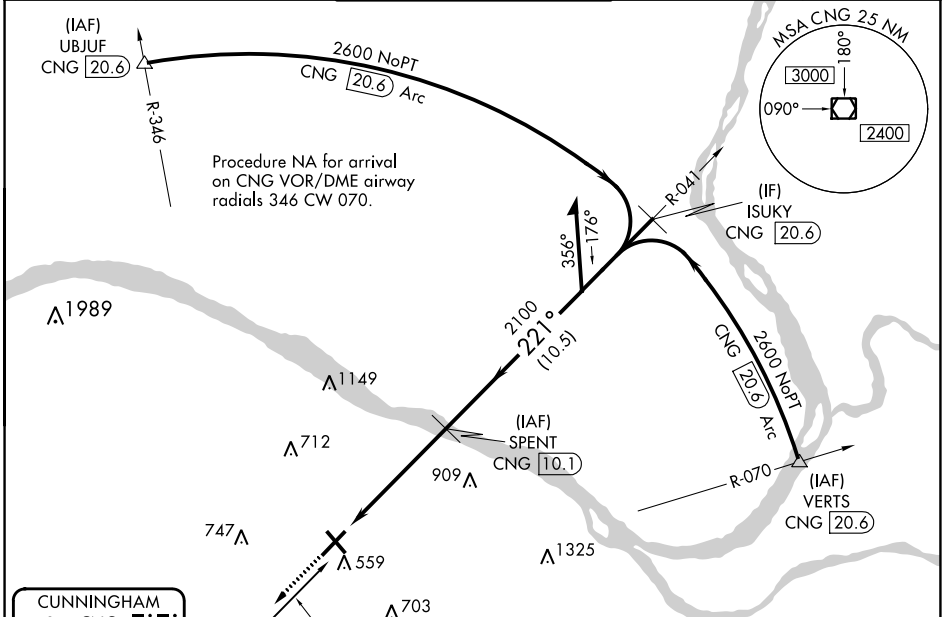
BARKLEY RGNL (PAH)

DME required.

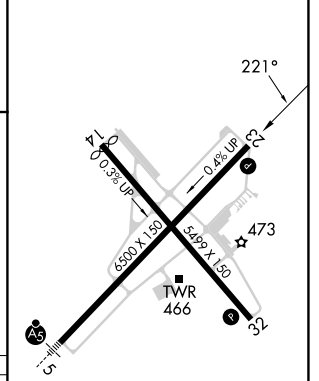
▼
▲ Rwy 23 helicopter visibility reduction below 3/4 SM NA.

MISSED APPROACH: Climb to 2600 direct CNG VOR/DME and hold, continue climb-in-hold to 2600.

ASOS 118.375	MEMPHIS CENTER 133.65 292.15	PADUCAH TOWER ★ 119.6 (CTAF) 306.9	GND CON 121.7 306.9	UNICOM 122.95
------------------------	--	--	-------------------------------	-------------------------



ELEV 411	D	TDZE 402
----------	----------	----------



CATEGORY	A	B	C	D
S-23	860-1 458 (500-1)		860-1 3/8 458 (500-1 3/8)	
C CIRCLING	900-1 489 (500-1)		920-1 1/2 509 (600-1 1/2)	1100-2 1/4 689 (700-2 1/4)

2600	CNG	2100	2200
------	-----	------	------

HIRL Rwy 5-23

MIRL Rwy 14-32

REIL Rws 23 and 32

SE-1, 28 NOV 2024 to 26 DEC 2024

SE-1, 28 NOV 2024 to 26 DEC 2024