

FORT SMITH, ARKANSAS

HI-VOR Y or TACAN Y RWY 8

VORTAC FSM 110.4 Chan 41	APCH CRS 053°	Rwy Idg TDZE 469 Arprt Elev 469	9318
--	-------------------------	---	-------------

[USAF] FORT SMITH RGNL (EBBING FLD ANGB) (KF5M)

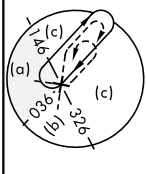
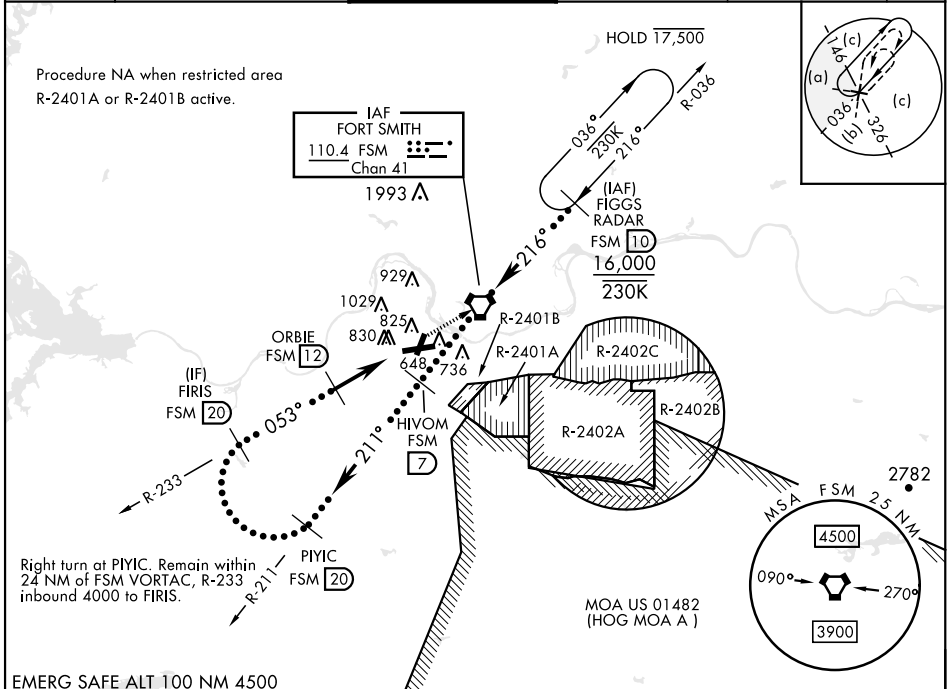
DME required



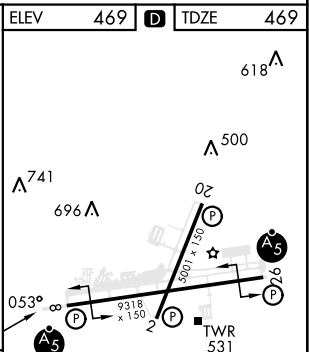
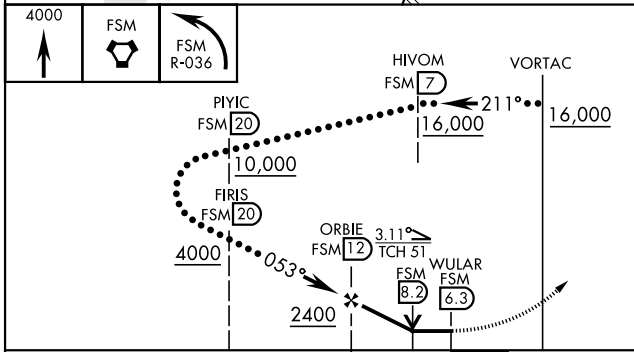
MISSED APPROACH: Climb to 4000 direct
FSM VORTAC and on R-036 to FIGGS
(FSM R-036/10 DME) and hold.

▼ *Circling not authorized for CAT E NW of Rwy 8 and 20.
Circling to Rwy 20 and Rwy 26 not authorized at night.

ATIS 124.775	RAZORBACK APP CON * 120.9 343.75	TOWER * 118.3 (CTAF) 323.175	GND CON 121.9 275.8	CLNC DEL 133.85 278.3	ASR
------------------------	--	---	-------------------------------	---------------------------------	-----



EMERG SAFE ALT 100 NM 4500



CATEGORY	C	D	E
S-8	1120-1 7/8	651 (700-1 7/8)	
CIRCLING*	1400-2 3/4 931 (1000-2 3/4)	1400-3	931 (1000-3)

ELEV	469	TDZE	469
HIRL Rwy 8-26	1	MIRL Rwy 2-20	1

FORT SMITH, ARKANSAS 35°20'N-94°22'W FORT SMITH RGNL (EBBING FLD ANGB) (KF5M)

Amdt 7C 21MAR24

HI-VOR Y or TACAN Y RWY 8

SC-1, 28 NOV 2024 to 26 DEC 2024

SC-1, 28 NOV 2024 to 26 DEC 2024