

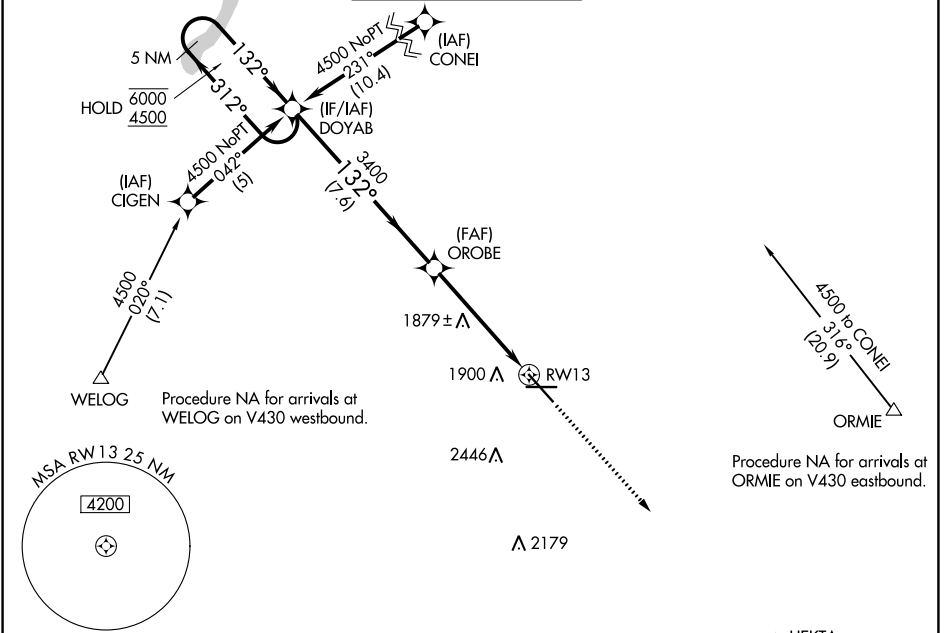
WAAS CH 70399 W13A	APP CRS 132°	Rwy Idg TDZE Apt Elev	7700 1702 1716
--	------------------------	-----------------------------	---

RNAV (GPS) RWY 13

MINOT INTL (MOT)

RNP APCH.	MISSED APPROACH: Climb to 4000 direct HEKTA and hold.
▼ For uncompensated Baro-VNAV systems, LNAV/VNAV NA below -18°C or above 54°C.	

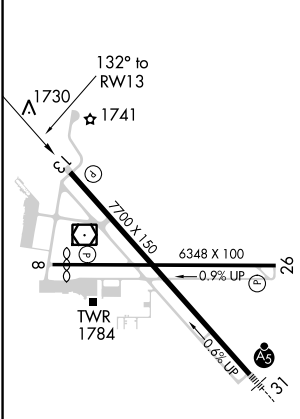
ASOS 118.725	MINOT APP CON * 119.6 363.8	MAGIC CITY TOWER * 118.2 (CTAF) 0 251.125	GND CON 121.9	UNICOM 122.95
------------------------	---------------------------------------	---	-------------------------	-------------------------



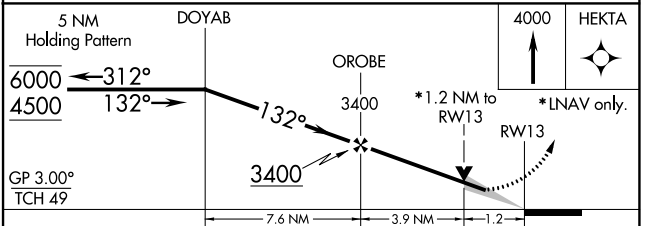
NC-1, 28 NOV 2024 to 26 DEC 2024

NC-1, 28 NOV 2024 to 26 DEC 2024

ELEV 1716	D	TDZE 1702
-----------	----------	-----------



REIL Rwy 13
REIL Rwy 8 and 26
HIRL Rwy 8-26 and 13-31



CATEGORY	A	B	C	D
LPV DA	2021-1 319 (400-1)			
LNAV/VNAV DA	2181-1¾ 479 (500-1¾)			
LNAV MDA	2140-1	438 (500-1)	2140-1¼ 438 (500-1¼)	2140-1½ 438 (500-1½)
CIRCLING	2200-1 484 (500-1)	2240-1 524 (600-1)	2800-3 1084 (1100-3)	