

(YELM5.YELM) 23334

YELM FIVE DEPARTURE

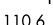
AL-645 (FAA)

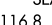
OLYMPIA RGNL (OLM)
OLYMPIA, WASHINGTON

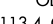
OLYMPIA TOWER *
124.4 (CTAF) 254.25
SEATTLE DEP CON
121.1 290.9

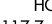
TATOOSH
112.2 TOU 
Chan 59

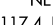
**TOP ALTITUDE:
3000**

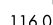
PAINÉ
110.6 PAE 
Chan 43

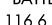
SEATTLE
116.8 SEA 
Chan 115

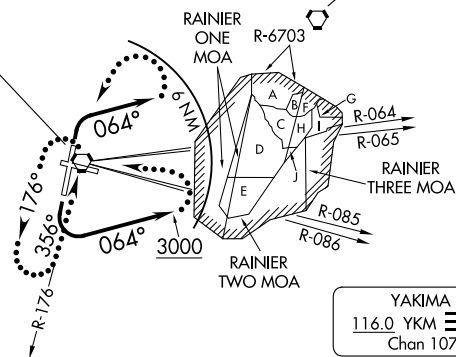
OLYMPIA
113.4 OLM 
Chan 81

HOQUIAM
117.7 HQM 
Chan 124

NEWBERG
117.4 UBG 
Chan 121

YAKIMA
116.0 YKM 
Chan 107

BATTLE GROUND
116.6 BTG 
Chan 113



NW-1, 28 NOV 2024 to 26 DEC 2024

NW-1, 28 NOV 2024 to 26 DEC 2024

TAKEOFF MINIMUMS
Rwys 8, 26: NA- ATC.
Rwy 17: 300-2 with minimum climb of 210' per NM to 2200 or
standard with minimum climb of 720' per NM to 500.
Rwy 35: Standard.

NOTE: RADAR required.
NOTE: Chart not to scale.



DEPARTURE ROUTE DESCRIPTION

TAKEOFF RUNWAY 17: Turn left, climb heading 064° to 3000, thence. . . .
TAKEOFF RUNWAY 35: Turn right, climb heading 064°, maintain 3000 thence. . . .
. . . .for RADAR vectors on course and filed altitude.

LOST COMMUNICATIONS: If no contact with ATC within 6 NM of OLM VORTAC, or 2 minutes after departure for non-DME aircraft, turn left direct OLM VORTAC, continue climb in OLM VORTAC holding pattern to cross OLM VORTAC at or above R-086 CW R-064 4200 feet; R-065 CW R-085 7300 feet, continue climb on assigned route.

YELM FIVE DEPARTURE
(YELM5.YELM) 19JUL18

OLYMPIA, WASHINGTON
OLYMPIA RGNL (OLM)