

APP CRS	Rwy Idg	5395
051°	TDZE	716
	Apt Elev	721

RNAV (GPS) RWY 5

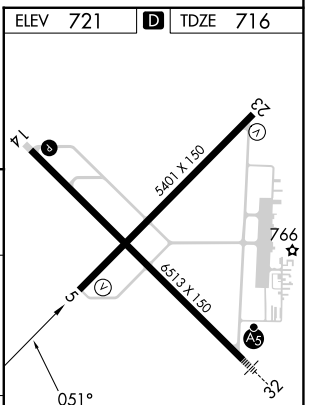
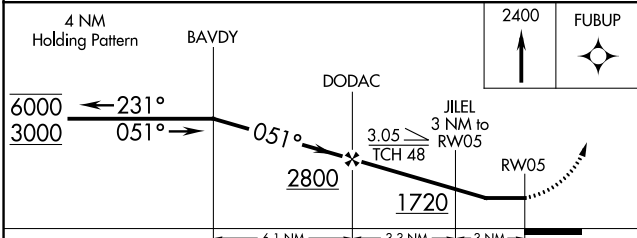
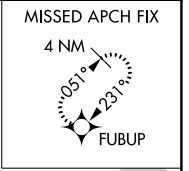
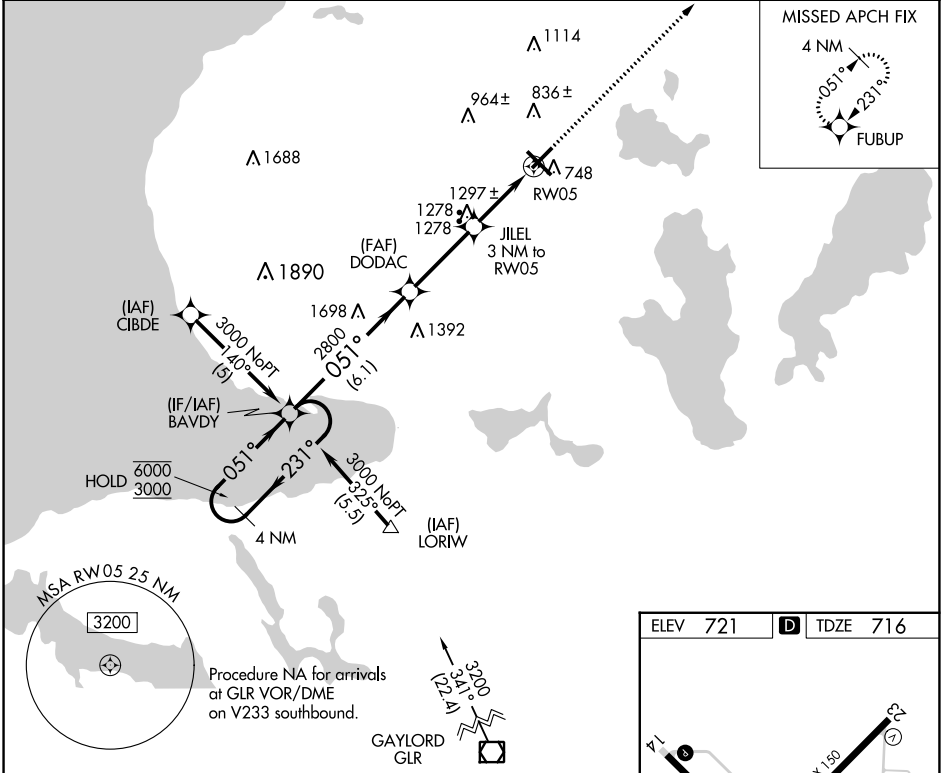
PELLSTON RGNL/EMMET COUNTY (PLN)

RNP APCH.

▼ Straight-in Rwy 5 NA at night, Circling Rwy 5, 14, 23 NA at night.
▲ Rwy 5 helicopter visibility reduction below 1 SM NA.
 When local altimeter setting not received, use Harbor Springs altimeter setting and increase all MDA 40 feet, increase LNAV Cat A visibility ¼ SM.

MISSED APPROACH:
 Climb to 2400 direct FUBUP and hold.

ASOS 119.025	MINNEAPOLIS CENTER 134.6 354.05	UNICOM 123.0 (CTAF) 0
-------------------------------	--------------------------------------------------	----------------------------------------



CATEGORY	A	B	C	D
LNAV MDA	1560-1 844 (900-1)	1560-1¼ 844 (900-1¼)	1560-2½ 844 (900-2½)	1560-2¾ 844 (900-2¾)
CIRCLING	1560-1¼	839 (900-1¼)	1560-2½ 839 (900-2½)	1660-3 939 (1000-3)

HIRL Rwy 14-32 0
 MRL Rwy 5-23 0
 REIL Rws 5, 14, and 23 0

EC-1, 28 NOV 2024 to 26 DEC 2024

EC-1, 28 NOV 2024 to 26 DEC 2024