

WAAS CH 82010 W05A	APP CRS 053°	Rwy Idg TDZE Apt Elev	8002 666 668
--	------------------------	-----------------------------	---

RNAV (GPS) RWY 5

MBS INTL (MBS)

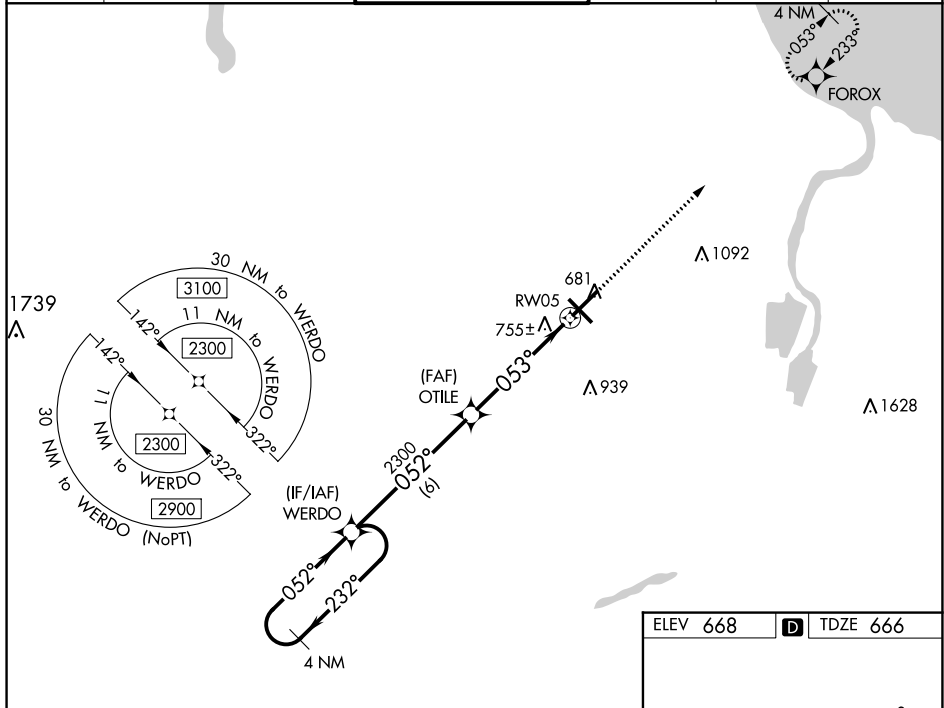
▼ For uncompensated Baro-VNAV systems, LNAV/VNAV NA below -18°C (0°F) or above 54°C (130°F). DME/DME RNP-0.3 NA. For inoperative ALS, increase LNAV/VNAV all Cats visibility to RVR 4500 and LNAV Cats C/D visibility to RVR 6000. ** RVR 1800 authorized with use of FD or AP or HUD to DA.

MALSR



MISSED APPROACH:
Climb to 2300 direct FOROX and hold.

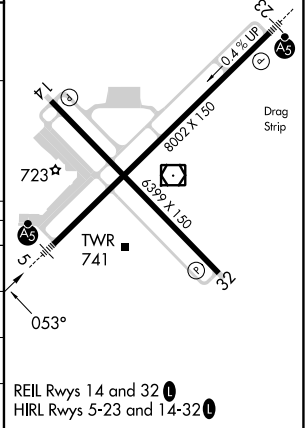
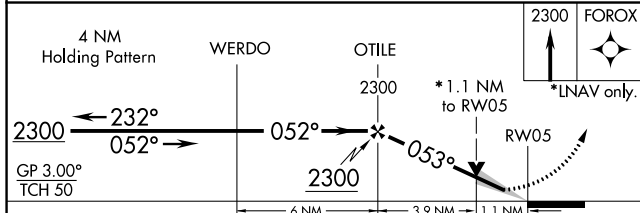
ATIS 125.925	GREAT LAKES APP CON* 126.45 235.625	SAGINAW TOWER* 120.1(CTAF) 257.7	GND CON 121.7	CLNC DEL 121.85	UNICOM 122.95
------------------------	---	--	-------------------------	---------------------------	-------------------------



EC-1, 28 NOV 2024 to 26 DEC 2024

EC-1, 28 NOV 2024 to 26 DEC 2024

ELEV 668	D	TDZE 666
----------	---	----------



CATEGORY	A	B	C	D
LPV DA**		866/24	200 (200-½)	
LNAV/ VNAV DA		955/24	289 (300-½)	
LNAV MDA	1080/24	414 (500-½)	1080/40	414 (500-¾)
CIRCLING	1080-1 412 (500-1)	1120-1 452 (500-1)	1240-1½ 572 (600-1½)	1240-2 572 (600-2)

REIL Rwy 14 and 32
HIRL Rwy 5-23 and 14-32