

VOR/DME GDM <b>116.95</b> Chan 116 (Y)	APP CRS <b>347°</b>	Rwy Idg TDZE Apt Elev	<b>5000</b> <b>998</b> <b>1009</b>
--	------------------------	-----------------------------	--

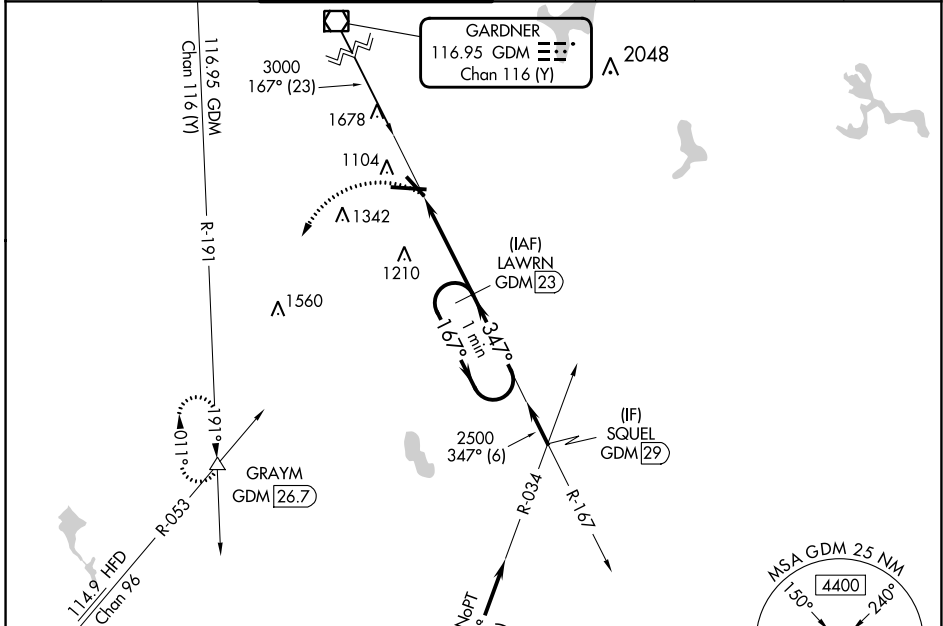
# VOR/DME RWY 33

WORCESTER RGNL (ORH)

**⚠** When local altimeter setting not received, use Bedford altimeter setting and increase all MDAs 200 feet; increase S-33 Cat C/D visibility ½ SM and Circling Cat B ¼ SM.

**MISSED APPROACH:** Climbing left turn to 3000 on heading 240° and GDM VOR/DME R-191 to GRAYM INT/GDM 26.7 DME and hold.

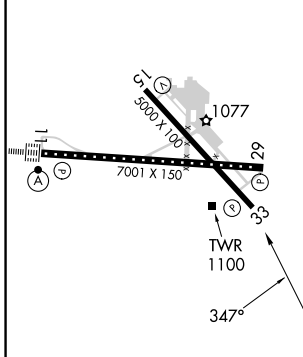
ATIS <b>126.55</b>	BRADLEY APP CON <b>119.0 327.1</b>	WORCESTER TOWER ★ <b>120.5 (CTAF) 263.0</b>	GND CON <b>123.85</b>	CLNC DEL <b>128.65</b>	CLNC DEL <b>119.0</b> (When twr closed)	UNICOM <b>122.95</b>
-----------------------	---------------------------------------	--	--------------------------	---------------------------	---	-------------------------



NE-1, 28 NOV 2024 to 26 DEC 2024

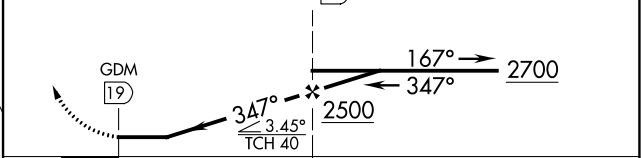
NE-1, 28 NOV 2024 to 26 DEC 2024

ELEV 1009	<b>D</b>	TDZE 998
-----------	----------	----------



TDZ/CL Rwy 11  
REIL Rwys 15, 29 and 33  
HIRL Rwy 11-29  
MIRL Rwy 15-33

3000 hdg 240° GDM R-191 GRAYM VGSI and descent angles not coincident (VGSI Angle 3.00/TCH 40).  
LAWRN GDM 23 One Minute Holding Pattern



CATEGORY	A	B	C	D
S-33	1520-1	522 (600-1)	1520-1½	522 (600-1½)
<b>C</b> CIRCLING	1560-1 551 (600-1)	1720-1 711 (800-1)	2000-3	991 (1000-3)