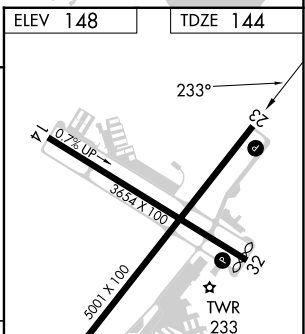
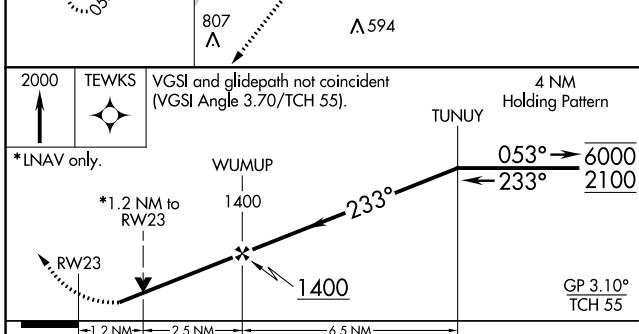
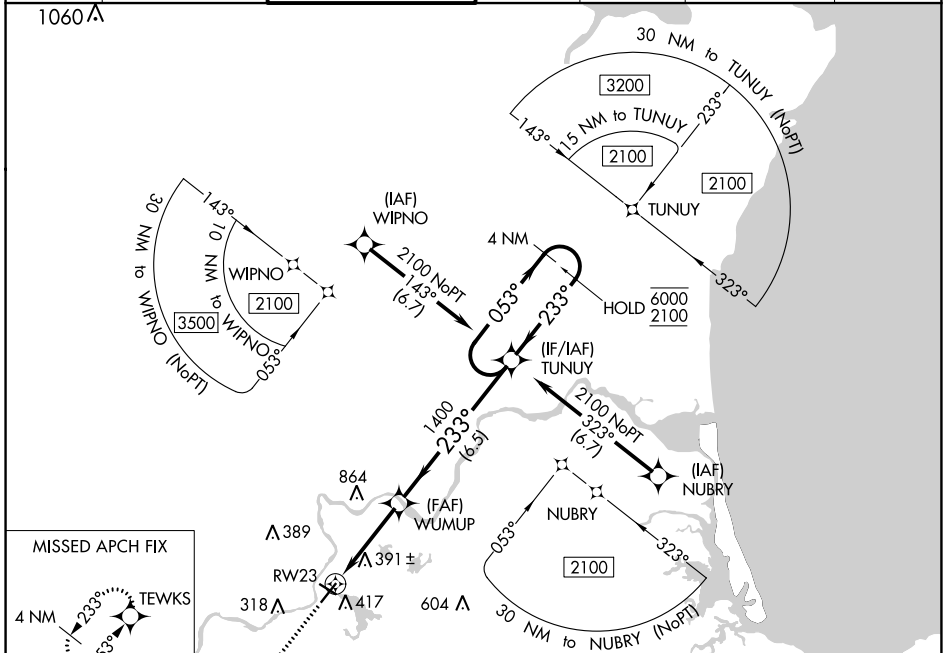


WAAS CH <b>61022</b> <b>W23A</b>	APP CRS <b>233°</b>	Rwy Idg TDZE <b>144</b> Apt Elev <b>148</b>	<b>5001</b>
--	------------------------	--	-------------

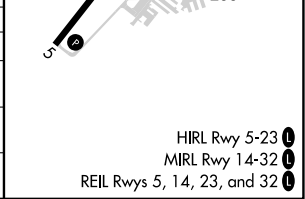
# RNAV (GPS) RWY 23

LAWRENCE MUNI (LWM)

RNP APCH. ⚠ Circling Rwy 32 NA at night. Rwy 23 helicopter visibility reduction below 3/4 SM NA. ⚠ For uncompensated Baro-VNAV systems, LNAV/VNAV NA below -20°C or above 54°C.		MISSED APPROACH: Climb to 2000 direct TEWKS and hold.	
ATIS <b>126.75</b>	BOSTON APP CON <b>124.4 279.6</b>	LAWRENCE TOWER * <b>119.25 (CTAF)</b>	GND CON <b>124.3</b>
			CLNC DEL <b>124.3</b>
			CLNC DEL <b>126.15</b> (When twr closed)
			UNICOM <b>122.8</b>



CATEGORY	A	B	C	D
LPV DA		562-1 1/8	418 (500-1 1/8)	
LNAV/VNAV DA		717-1 5/8	573 (600-1 5/8)	
LNAV MDA	660-1	516 (600-1)	660-1 3/8	516 (600-1 3/8)
CIRCLING	740-1	592 (600-1)	840-2 692 (700-2)	1220-3 1072 (1100-3)



NE-1, 28 NOV 2024 to 26 DEC 2024

NE-1, 28 NOV 2024 to 26 DEC 2024