

(BNGLE5.BNGLE) 24081

CINCINNATI/NORTHERN KENTUCKY INTL (CVG)

BNGLE FIVE DEPARTURE (RNAV)

AL-655 (FAA)

COVINGTON, KENTUCKY

CINCINNATI DEP CON
 126.65 254.25 (001°-180°)
 128.7 254.25 (181°-360°)
 D-ATIS DEP 135.3
 CLNC DEL 127.175
 CPDLC
 GND CON 121.7
 CINCINNATI TOWER
 118.3 (RWYS 18C/36C, 9/27)
 118.975 360.85 (RWY 18L/36R)
 133.325 (RWY 18R/36L)

RNAV 1 - DME/DME/IRU or GPS.

RADAR required for non-GPS equipped aircraft.

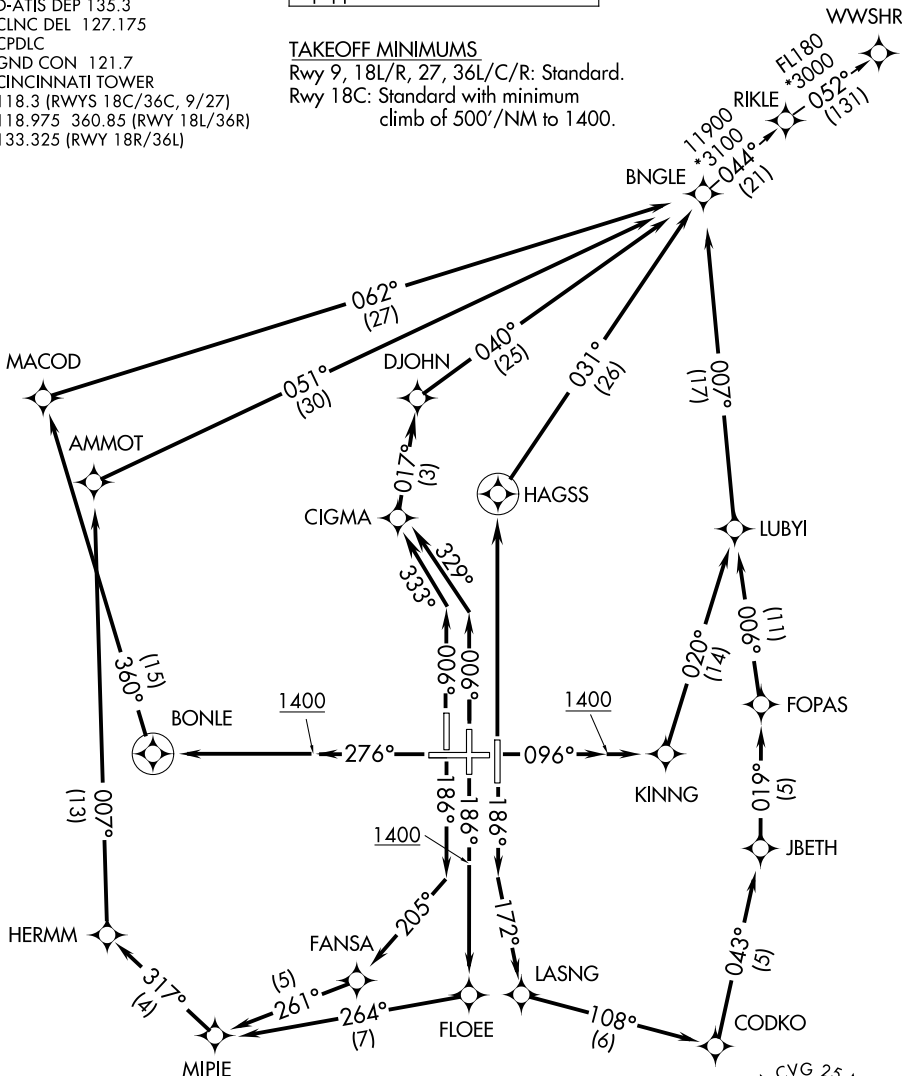
TOP ALTITUDE:
 (JETS) 5000/(PROPS) 4000

TAKEOFF MINIMUMS

Rwy 9, 18L/R, 27, 36L/C/R: Standard.

Rwy 18C: Standard with minimum climb of 500'/NM to 1400.

WWSHR

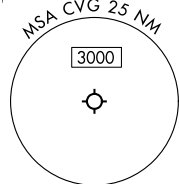


NOTE: Increase speed to 250K until reaching/leaving 10000' feet.

If unable, advise ATC.

NOTE: If unable to accept climb rates, advise ATC on initial contact.

NOTE: Transponder code will be issued via PDC or Cincinnati CLNC DEL.



(CONTINUED ON FOLLOWING PAGE)

NOTE: Chart not to scale.

BNGLE FIVE DEPARTURE (RNAV)

COVINGTON, KENTUCKY

(BNGLE5.BNGLE) 21MAR24

CINCINNATI/NORTHERN KENTUCKY INTL (CVG)

SE-1, 28 NOV 2024 to 26 DEC 2024

SE-1, 28 NOV 2024 to 26 DEC 2024