

LOC/DME I-EEI 110.35 Chan 40 (Y)	APP CRS 006°	Rwy Idg 10000 TDZE 896 Apt Elev 896
---	------------------------	--

ILS or LOC RWY 36R

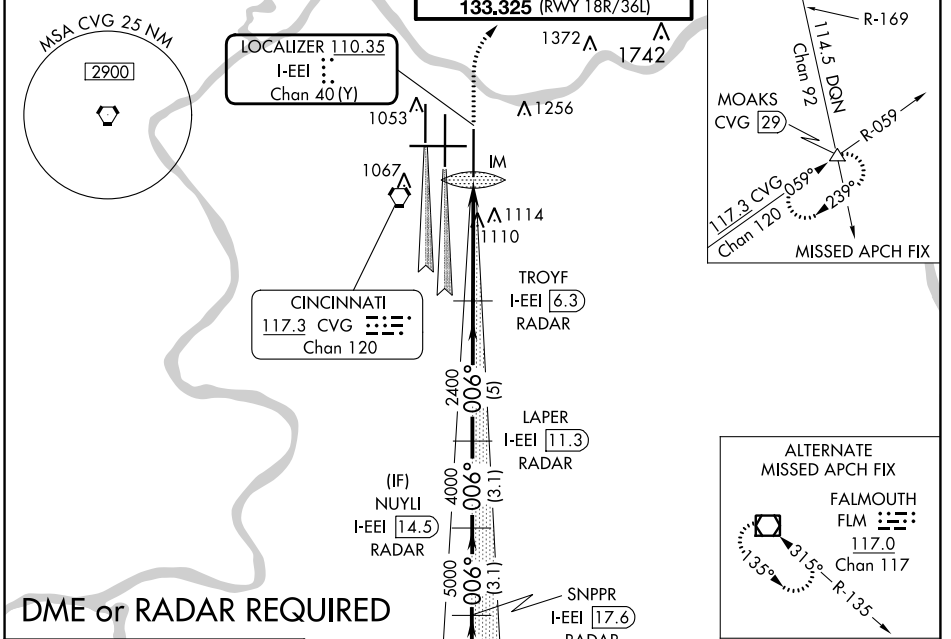
CINCINNATI/NORTHERN KENTUCKY INTL (CVG)

Simultaneous approach authorized with Rwy 36C and 36L.
DME or radar required.

ALSF-2

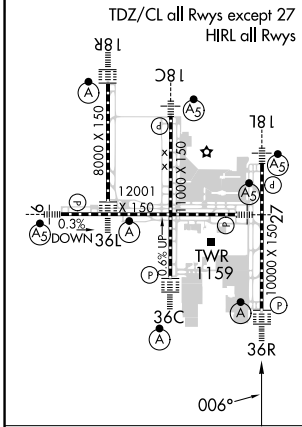
MISSED APPROACH: Climb to 1500 then climbing right turn to 3000 via CVG R-059 to MOAKS Int/ CVG 29 DME and hold.

D-ATIS ARR 134.375 DEP 135.3	CINCINNATI APP CON 119.7 363.15 (090°-269°) 123.875 363.15 (270°-089°)	CINCINNATI TOWER 118.975 360.85 (RWY 18L/36R) 118.3 (RWYS 18C/36C, 09/27) 133.325 (RWY 18R/36L)	GND CON 121.7	CLNC DEL 127.175	CPDLC
---	--	---	-------------------------	----------------------------	-------



DME or RADAR REQUIRED

ELEV 896	D	TDZE 896
----------	----------	----------



(IAF) KYKAT I-EEI **20.8** RADAR

7000 287° (16.3)

FALMOUTH 117.0 FLM (Chan 117)

1500 3000 MOAKS VGSi and ILS glidepath not coincident (VGSi Angle 3.00°/TCH 70). SNPPR I-EEI **17.6** RADAR

CVG R-059

NUYLI I-EEI **14.5** RADAR

LAPER I-EEI **11.3** RADAR

TROYF I-EEI **6.3** RADAR

IM I-EEI **1.8** I-EEI **3**

2400 4000 5000 7000

Procedure Turn NA

GS 3.00° TCH 55

CATEGORY	A	B	C	D
S-ILS 36R	1096/18		200 (200-½)	
S-LOC 36R	1360/24	464 (500-½)	1360/50	464 (500-1)
CIRCLING	1460-1	564 (600-1)	1560-1¾ 664 (700-1¾)	1560-2 664 (700-2)

FAF to MAP 4.5 NM

Knots	60	90	120	150	180
Min:Sec	4:30	3:00	2:15	1:48	1:30

SE-1, 28 NOV 2024 to 26 DEC 2024

SE-1, 28 NOV 2024 to 26 DEC 2024