

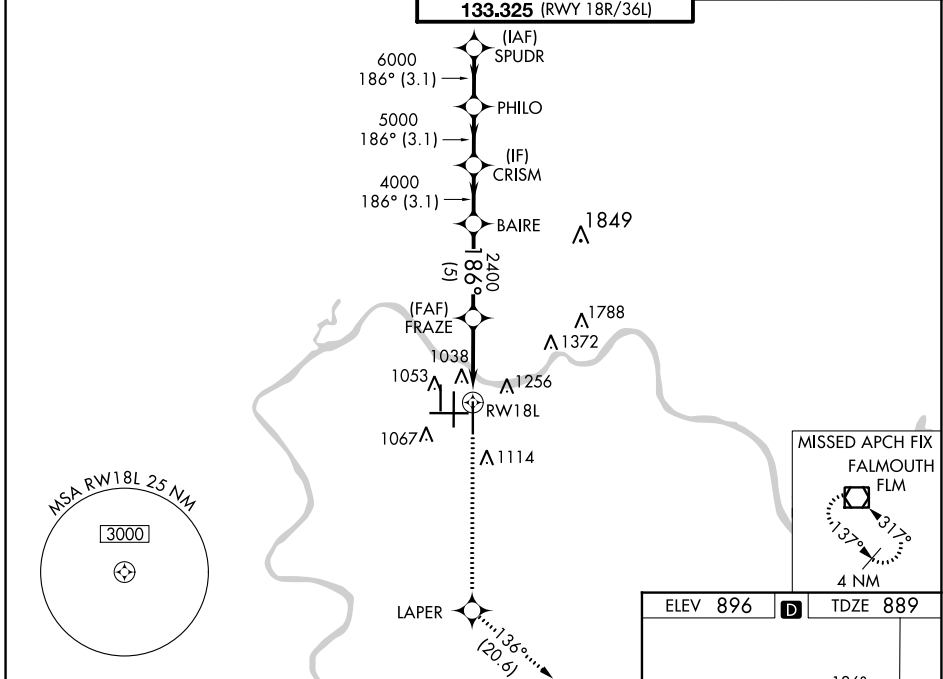
WAAS CH 40103 W18A	APP CRS 186°	Rwy Idg TDZE 889 Apt Elev 896	10000
--	------------------------	---	--------------

RNAV (GPS) Y RWY 18L

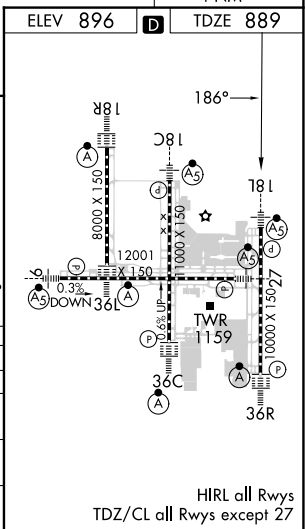
CINCINNATI/NORTHERN KENTUCKY INTL (CVG)

RADAR required for procedure entry. RNP APCH - GPS.		MALSR 	MISSED APPROACH: Climb to 3000 direct LAPER and on track 136° to FLM VOR/DME and hold.
<p>▼ For uncompensated Baro-VNAV systems, LNAV/VNAV NA below -17°C or above 54°C. Simultaneous approach authorized with Rwy 18C/R. LNAV procedure NA during simultaneous operations. Use of FD or AP required during simultaneous operations. For inop ALS, increase LNAV/VNAV all Cats and LNAV Cat C/D visibility to 1 3/8 SM.</p>			

D-ATIS ARR 134.375 DEP 135.3	CINCINNATI APP CON 119.7 363.15 (090°-269°) 123.875 363.15 (270°-089°)	CINCINNATI TOWER 118.975 360.85 (RWY 18L/36R) 118.3 (RWYS 18C/36C, 09/27) 133.325 (RWY 18R/36L)	GND CON 121.7	CLNC DEL 127.175	CPDLC
---	--	---	-------------------------	----------------------------	-------



3000	LAPER	FLM	VGSI and RNAV glidepath not coincident (VGSI Angle 3.00/TCH 71).
↑			
	tr 136°		
	1.3 NM to RWY 18L	FRAZE 2400	BAIRE 4000
		CRISM 5000	PHILO 6000
			SPUDR 7000
			GP 3.00° TCH 55
	1.3 NM	3.3 NM	5 NM
		3.1 NM	3.1 NM
			3.1 NM
CATEGORY	A	B	C
LPV DA		1089/18	200 (200-1/2)
LNAV/VNAV DA		1395/55	506 (500-1)
LNAV MDA	1360/24	471 (500-1/2)	1360/50 471 (500-1)
CIRCLING	1460-1 564 (600-1)	1560-1 3/4 664 (700-1 3/4)	1560-2 664 (700-2)



SE-1, 28 NOV 2024 to 26 DEC 2024

SE-1, 28 NOV 2024 to 26 DEC 2024

HIRL all Rwy's
TDZ/CL all Rwy's except 27