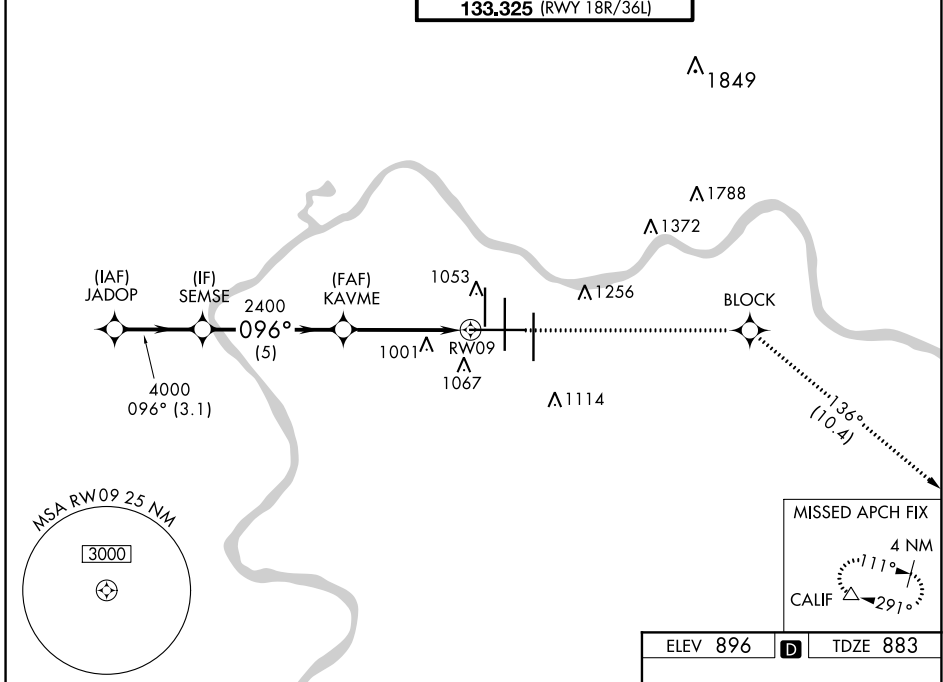


WAAS CH <b>65709</b> <b>W09A</b>	APP CRS <b>096°</b>	Rwy Idg <b>11640</b> TDZE <b>883</b> Aprt Elev <b>896</b>
--	------------------------	---

# RNAV (GPS) Y RWY 9

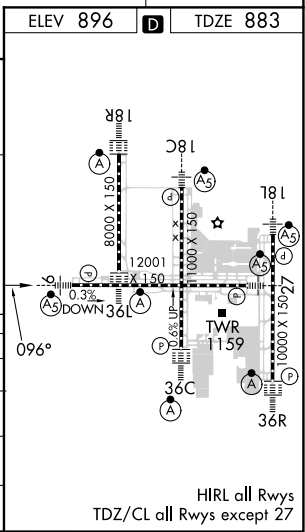
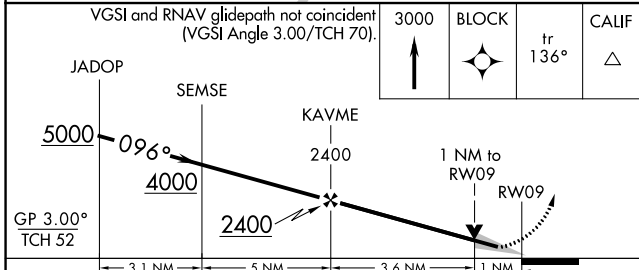
CINCINNATI/NORTHERN KENTUCKY INTL (CVG)

RNP APCH - GPS.		MALSR	MISSED APPROACH: Climb to 3000 direct BLOCK and on track 136° to CALIF and hold.		
▼ For uncompensated Baro-VNAV systems, LNAV/VNAV NA below -16° C or above 54° C. For inop ALS, increase LNAV/VNAV all Cats visibility to RVR 6000 and LNAV Cat C/D visibility to RVR 5500.					
D-ATIS ARR <b>134.375</b> DEP <b>135.3</b>	CINCINNATI APP CON <b>119.7 363.15</b> (090°-269°) <b>123.875 363.15</b> (270°-089°)	CINCINNATI TOWER <b>118.975 360.85</b> (RWY 18L/36R) <b>118.3</b> (RWYS 18C/36C, 09/27) <b>133.325</b> (RWY 18R/36L)	GND CON <b>121.7</b>	CLNC DEL <b>127.175</b>	CPDLC



SE-1, 28 NOV 2024 to 26 DEC 2024

SE-1, 28 NOV 2024 to 26 DEC 2024



CATEGORY	A	B	C	D
LPV DA		1083/18	200 (200-½)	
LNAV/VNAV DA		1297/40	414 (500-¾)	
LNAV MDA	1260/24	377 (400-½)	1260/35	377 (400-⅝)
CIRCLING	1460-1	564 (600-1)	1560-1¾ 664 (700-1¾)	1560-2 664 (700-2)

HIRL all Rwys  
TDZ/CL all Rwys except 27