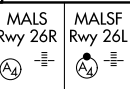


LOC/DME FAS 110.3 Chan 40	APP CRS 259°	Rwy Idg 26R 26L TDZE 12638 10526 2067 2069 Apt Elev 2181 2181
--	------------------------	--

ILS Z or LOC Z RWY 26R

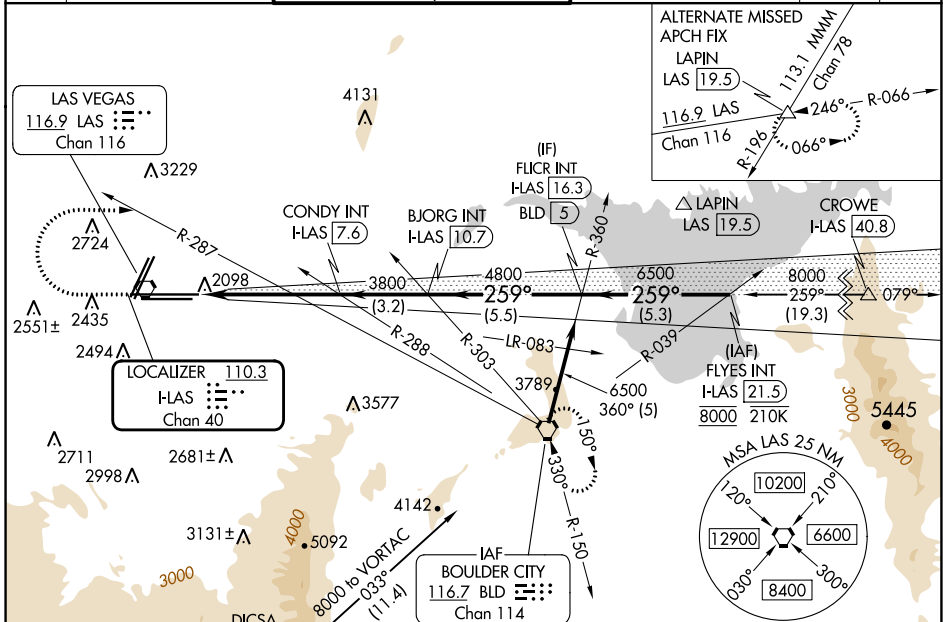
HARRY REID INTL (LAS)

⚠ For inop ALS, increase S-ILS-26R all Cats visibility to ½ SM, S-LOC-26R Cat E visibility to 1 ½ SM. Inop table does not apply to sidestep 26L.

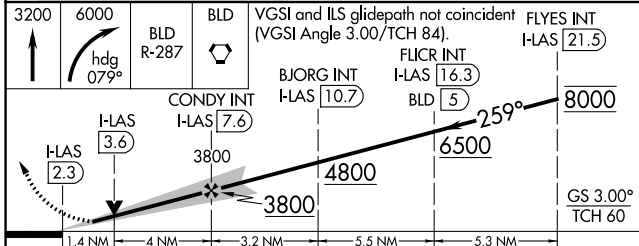


MISSED APPROACH: Climb to 3200 then climbing right turn to 6000 on heading 079° and on BLD R-287 to BLD VORTAC and hold, continue climb-in-hold to 6000.

D-ATIS 132.4	LAS VEGAS APP CON 125.025 379.15 (West) 119.775 282.2 (East)	LAS VEGAS TOWER 118.75 257.8 (Rwy 1L/19R, 1R/19L) 119.9 257.8 (Rwy 8L/26R, 8R/26L)	GND CON 121.1 270.8 E of 1R/19L 121.9 254.3 W of 1L/19R	CLNC DEL 118.0	CPDLC
------------------------	--	--	---	--------------------------	-------



ELEV 2181	TDZE 26R 2067	TDZE 26L 2069
-----------	---------------	---------------



CATEGORY	A	B	C	D	E
S-ILS 26R	2334-¾ 267 (200-¾)				
S-LOC 26R	2560-¾ 493 (400-¾)		2560-1⅝ 493 (400-1⅝)		
SIDESTEP 26L	2560-1 491 (400-1)	2560-1½ 491 (400-1½)		2560-2 491 (400-2)	
CIRCLING	3020-1¼ 839 (900-1¼)	3060-1¼ 879 (900-1¼)	3100-2¾ 919 (1000-2¾)	3540-3 1359 (1400-3)	

TWR 2433. Frequencies: 126.6, 126.7, 126.8, 126.9, 127.0, 127.1, 127.2, 127.3, 127.4, 127.5, 127.6, 127.7, 127.8, 127.9, 128.0, 128.1, 128.2, 128.3, 128.4, 128.5, 128.6, 128.7, 128.8, 128.9, 129.0, 129.1, 129.2, 129.3, 129.4, 129.5, 129.6, 129.7, 129.8, 129.9, 130.0.

Instructions: 1.1% DOWN, 1.2% DOWN, 1.2% 10526 X 150, 0.9% UP, 0.9% UP.

SW-4, 28 NOV 2024 to 26 DEC 2024

SW-4, 28 NOV 2024 to 26 DEC 2024