

# LOHLA THREE DEPARTURE (RNAV)

AL-662 (FAA)

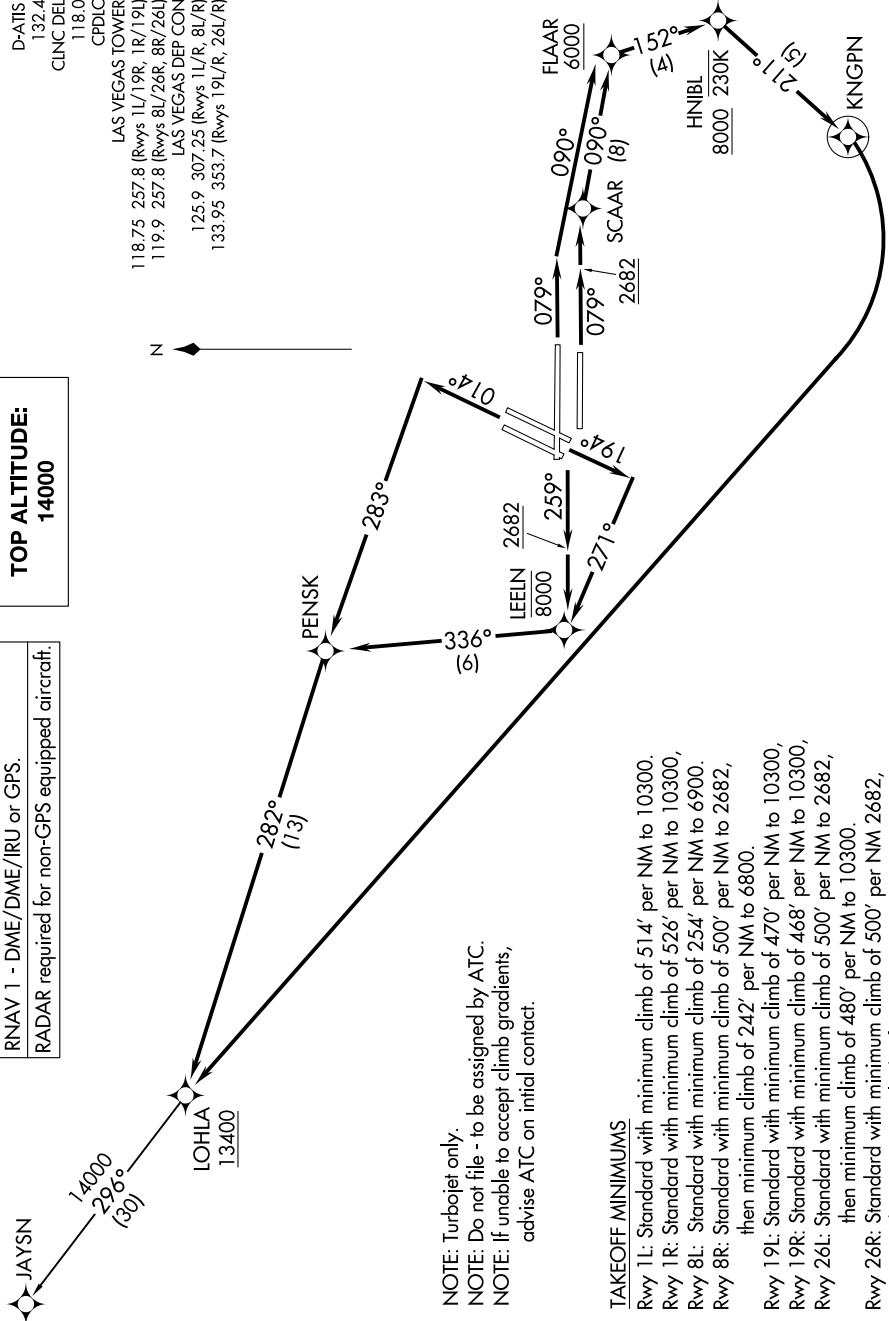
HARRY REID INTL (LAS)  
LAS VEGAS, NEVADA

SW-4, 28 NOV 2024 to 26 DEC 2024

D-ATIS 132.4  
CLNC DEL 118.0  
CPDIC  
LAS VEGAS TOWER  
118.75 257.8 (Rwys 1L/19R, 1R/19L)  
119.9 257.8 (Rwys 8L/26R, 8R/26L)  
LAS VEGAS DEP CON  
125.9 307.25 (Rwys 1L/R, 8L/R)  
133.95 353.7 (Rwys 19L/R, 26L/R)

**TOP ALTITUDE:**  
**14000**

RNAV 1 - DME/DME/IRU or GPS.  
RADAR required for non-GPS equipped aircraft.



NOTE: Chart not to scale.

(NARRATIVE ON FOLLOWING PAGE)

NOTE: Turbojet only.  
NOTE: Do not file - to be assigned by ATC.  
NOTE: If unable to accept climb gradients, advise ATC on initial contact.

**TAKEOFF MINIMUMS**

Rwy 1L: Standard with minimum climb of 514' per NM to 10300.  
Rwy 1R: Standard with minimum climb of 526' per NM to 10300,  
Rwy 8L: Standard with minimum climb of 254' per NM to 6900.  
Rwy 8R: Standard with minimum climb of 500' per NM to 2682,  
then minimum climb of 242' per NM to 6800.  
Rwy 19L: Standard with minimum climb of 470' per NM to 10300,  
Rwy 19R: Standard with minimum climb of 468' per NM to 10300,  
Rwy 26L: Standard with minimum climb of 500' per NM to 2682,  
then minimum climb of 480' per NM to 10300.  
Rwy 26R: Standard with minimum climb of 500' per NM 2682,  
then minimum climb of 495' per NM to 10300.

SW-4, 28 NOV 2024 to 26 DEC 2024