

MCCARRAN SEVEN DEPARTURE

AL-662 (FAA)

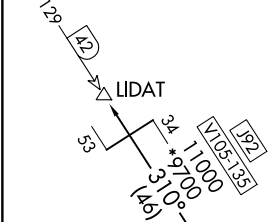
HARRY REID INTL (LAS)
LAS VEGAS, NEVADA

RADAR and DME required.

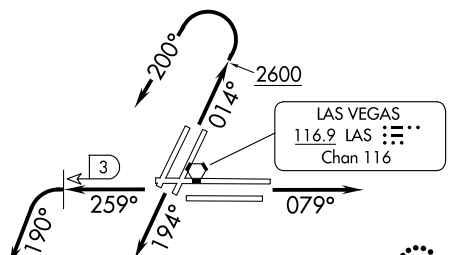
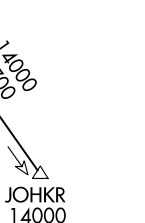
**TOP ALTITUDE:
ASSIGNED BY ATC**

LAS VEGAS DEP CON
125.9 307.25
D-ATIS
132.4
CLNC DEL
118.0
GND CON
121.1 270.8 E of 1R/19L
121.9 254.3 W of 1L/19R
LAS VEGAS TOWER
118.75 257.8 (Rwys 1L/19R, 1R/19L)
119.9 257.8 (Rwys 8L/26R, 8R/26L)

COALDALE
117.7 OAL :---
Chan 124



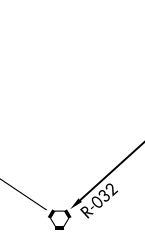
BEATTY
114.7 BTY :---
Chan 94



BOULDER CITY
116.7 BLD :---
Chan 114

NOTE: Rwys 1L/R: 3229' MSL monument, 3 NM north of DER. Numerous buildings from 0.6 NM northwest to 2.5 NM north of DER, up to 2779' MSL.

HECTOR
112.7 HEC :---
Chan 74



GOFFS
114.4 GFS :---
Chan 91

TAKEOFF MINIMUMS

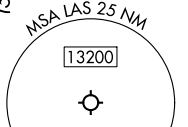
Rwys 1L/R: Standard with minimum climb of 526'/NM to 7000.
Rwys 8L/R: Standard with minimum climb of 440'/NM to 7000.
Rwys 19L/R, 26L/R: Standard with minimum climb of 410'/NM to 7000.

(CONTINUED ON FOLLOWING PAGE)

NOTE: Chart not to scale.



TWENTYNINE PALMS
114.2 TNP :---
Chan 89



MCCARRAN SEVEN DEPARTURE

SW-4, 28 NOV 2024 to 26 DEC 2024

SW-4, 28 NOV 2024 to 26 DEC 2024