

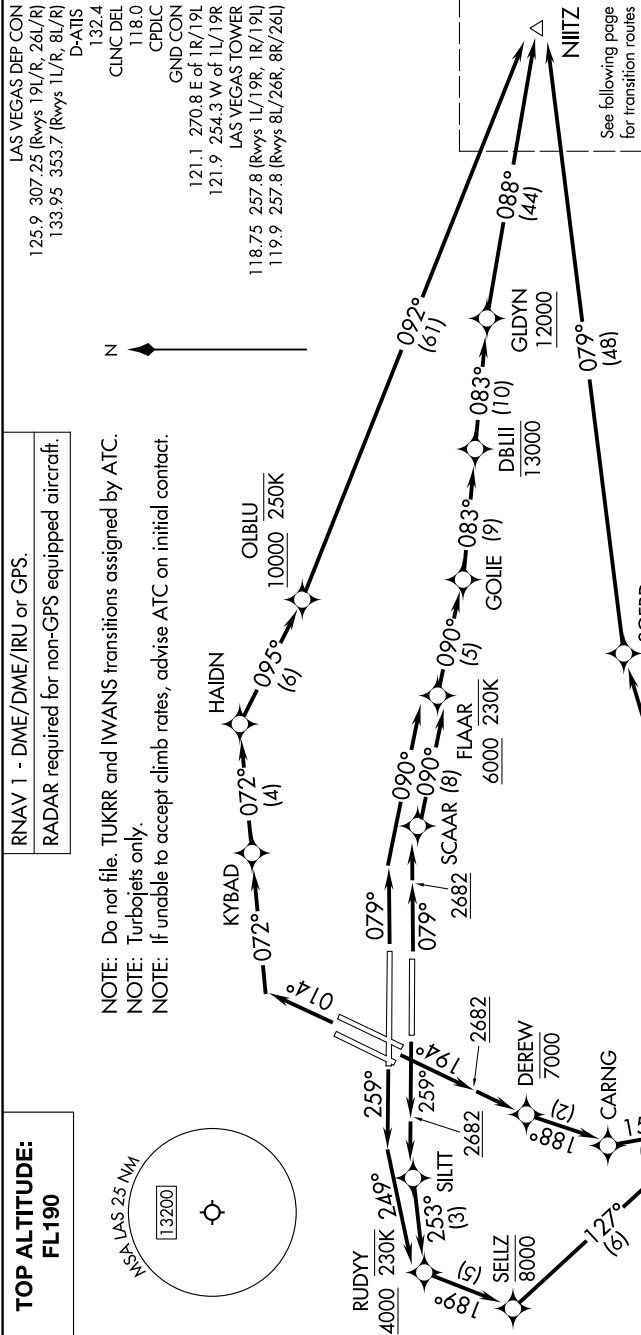
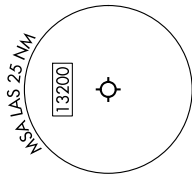
# N11TZ FOUR DEPARTURE (RNAV) Departure Routes

SW-4, 28 NOV 2024 to 26 DEC 2024

**TOP ALTITUDE:**  
FL190

RNAV 1 - DME/DME/IRU or GPS.  
RADAR required for non-GPS equipped aircraft.

NOTE: Do not file. TUKRR and IWANS transitions assigned by ATC.  
NOTE: Turbojets only.  
NOTE: If unable to accept climb rates, advise ATC on initial contact.



See following page  
for transition routes.

**TAKEOFF MINIMUMS**  
Rwys 1L/R: Standard with minimum climb of 500'/NM to 2682 then 280'/NM to 4800.  
Rwys 8L/R: Standard with minimum climb of 500'/NM to 2682.  
Rwys 19L/R: Standard with minimum climb of 571'/NM to 8000.  
Rwys 26L/R: Standard with minimum climb of 500'/NM to 2682 then 240'/NM to 5000.

NOTE: Chart not to scale.

(CONTINUED ON FOLLOWING PAGE)

SW-4, 28 NOV 2024 to 26 DEC 2024

# N11TZ FOUR DEPARTURE (RNAV) Departure Routes