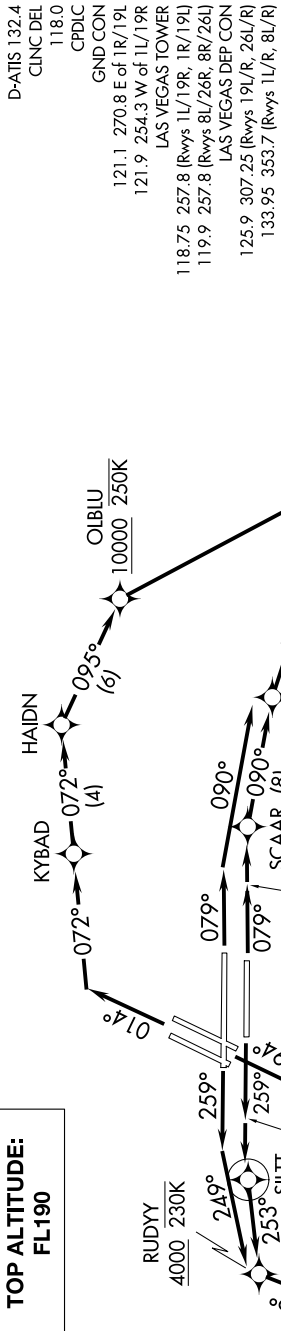


# RASLR THREE DEPARTURE (RNAV)

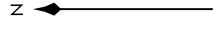
AL-662 (FAA)

HARRY REID INTL (LAS)  
LAS VEGAS, NEVADA

SW-4, 28 NOV 2024 to 26 DEC 2024



NOTE: DME/DME/IRU or GPS required.  
 NOTE: RNAV 1.  
 NOTE: RADAR required for non-GPS equipped aircraft.  
 NOTE: Turbojet only.



**TAKEOFF MINIMUMS**  
 Rwy 1L/R: Standard with minimum climb of 500' per NM to 2682, then minimum climb of 280' per NM to 4800.  
 Rwy 8L/R: Standard with minimum climb of 500' per NM to 2682.  
 Rwy 19L: Standard with minimum climb of 500' per NM to 2682, then minimum climb of 255' per NM to 4400.  
 Rwy 19R: Standard with minimum climb of 500' per NM to 2682, then minimum climb of 255' per NM to 4300.  
 Rwy 26L: Standard with minimum climb of 500' per NM to 2682, then minimum climb of 230' per NM to 4700.  
 Rwy 26R: Standard with minimum climb of 500' per NM to 2682, then minimum climb of 235' per NM to 4700.

NOTE: Chart not to scale.

(CONTINUED ON FOLLOWING PAGE)

SW-4, 28 NOV 2024 to 26 DEC 2024

# RASLR THREE DEPARTURE (RNAV)

LAS VEGAS, NEVADA  
HARRY REID INTL (LAS)