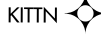


RATPK THREE DEPARTURE (RNAV)

AL-662 (FAA)

HARRY REID INTL (LAS)
LAS VEGAS, NEVADA

D-ATIS
132.4
CLNC DEL
118.0
CPDLC
GND CON
121.1 270.8 E of 1R/19L
121.9 254.3 W of 1L/19R
LAS VEGAS TOWER
118.75 257.8 (Rwys 1L/19R, 1R/19L)
119.9 257.8 (Rwys 8L/26R, 8R/26L)
LAS VEGAS DEP CON
125.9 307.25 (Rwys 8L/R)
133.95 353.7 (Rwys 1L/R, 19L/R, 26L/R)



**TOP ALTITUDE:
FL190**

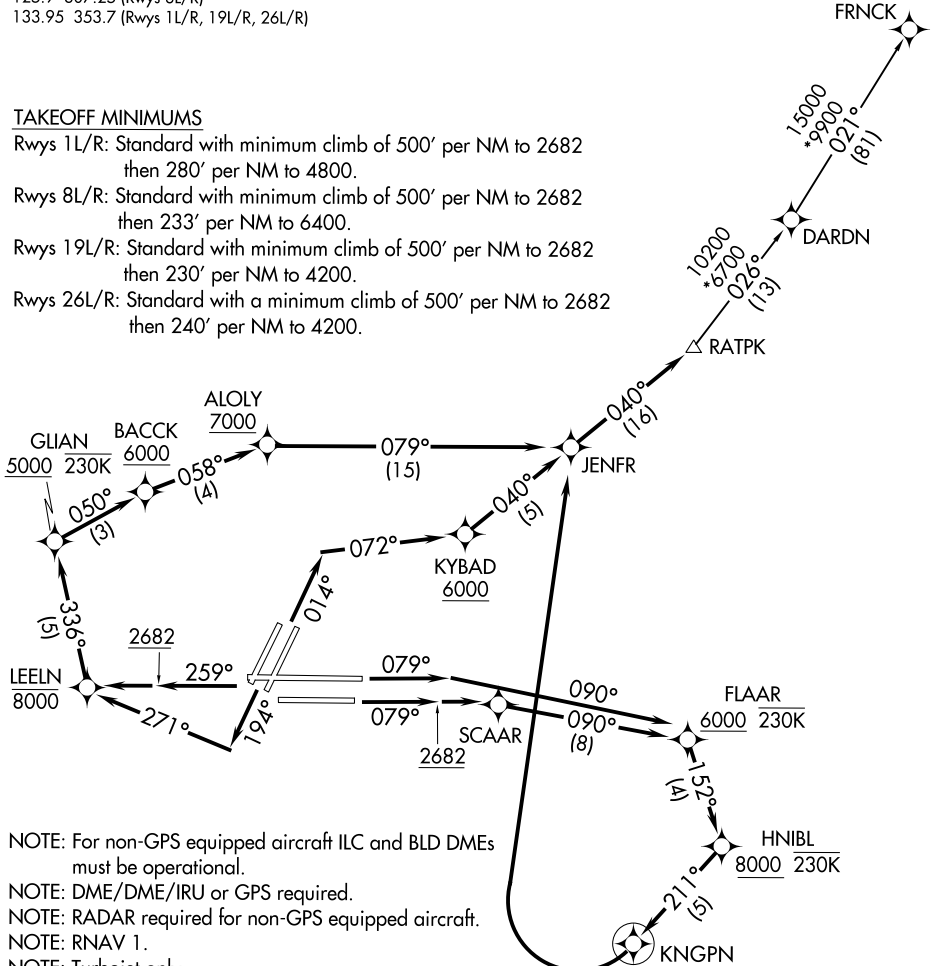
TAKEOFF MINIMUMS

Rwys 1L/R: Standard with minimum climb of 500' per NM to 2682 then 280' per NM to 4800.

Rwys 8L/R: Standard with minimum climb of 500' per NM to 2682 then 233' per NM to 6400.

Rwys 19L/R: Standard with minimum climb of 500' per NM to 2682 then 230' per NM to 4200.

Rwys 26L/R: Standard with a minimum climb of 500' per NM to 2682 then 240' per NM to 4200.



SW-4, 28 NOV 2024 to 26 DEC 2024

SW-4, 28 NOV 2024 to 26 DEC 2024

- NOTE: For non-GPS equipped aircraft ILC and BLD DMEs must be operational.
- NOTE: DME/DME/IRU or GPS required.
- NOTE: RADAR required for non-GPS equipped aircraft.
- NOTE: RNAV 1.
- NOTE: Turbojet only.

(CONTINUED ON FOLLOWING PAGE)

NOTE: Chart not to scale.

RATPK THREE DEPARTURE (RNAV)