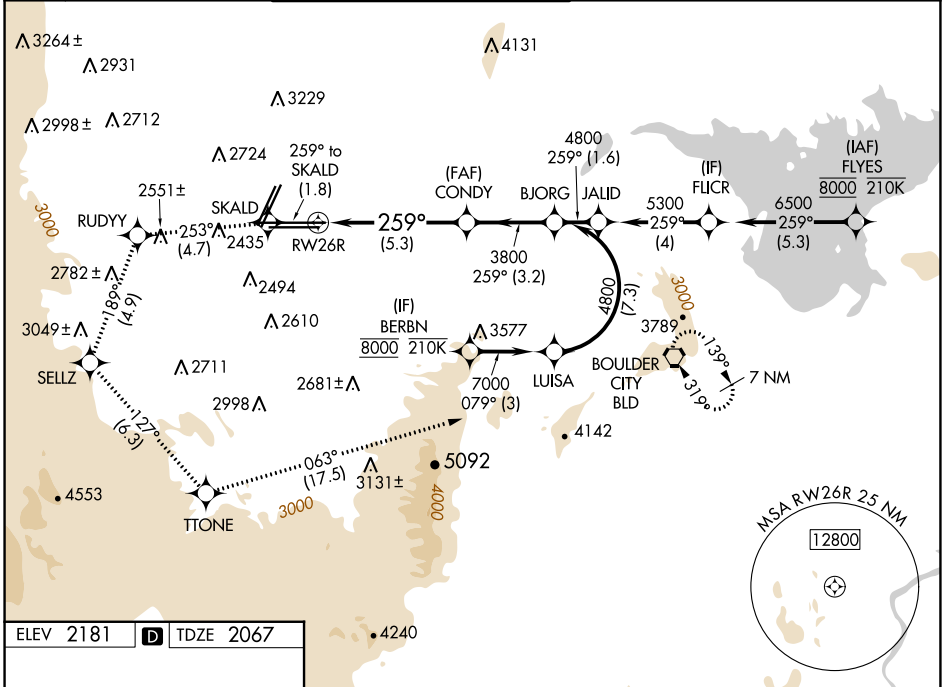


APP CRS 259°	Rwy Idg 12638
	TDZE 2067
	Apt Elev 2181

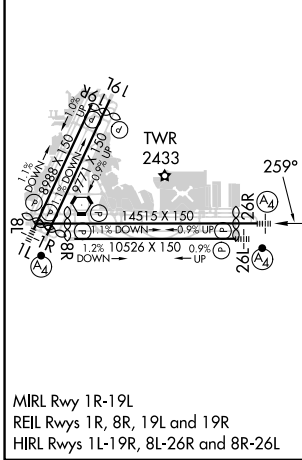
RNAV (RNP) RWY 26R

HARRY REID INTL (LAS)

RNP AR APCH-GPS.		MALS	MISSED APPROACH: Cimb to 7000 on the RNAV missed approach route to BLD VORTAC and hold. * Missed approach requires minimum climb of 230 feet per NM to 3200.			
For uncompensated Baro-VNAV systems, procedure NA below -1°C or above 54°C.						
D-ATIS 132.4	LAS VEGAS APP CON 125.025 379.15 (West) 119.775 282.2 (East)	LAS VEGAS TOWER 118.75 257.8 (Rwy 1L/19R, 1R/19L) 119.9 257.8 (Rwy 8L/26R, 8R/26L)		GND CON 121.1 270.8 E of 1R/19L 121.9 254.3 W of 1L/19R	CLNC DEL 118.0	CPDLC



ELEV 2181		TDZE 2067
-----------	--	-----------



7000	SKALD	RUDYY	SELLZ	TTONE	BLD
↑		tr 253°		tr 189°	
tr 259°					
VGS and RNAV glidepath not coincident (VGS Angle 3.00/TCH 84). See planview for multiple IF locations.					
CONDY		BJORG			
3800		4800			
RW26R		3800		GP 3.00° TCH 60	
-5.3 NM		-3.2 NM			
CATEGORY	A	B	C	D	
RNP 0.30 DA*	2457-7/8		390 (300-7/8)		
RNP 0.30 DA	2508-1		441 (400-1)		
AUTHORIZATION REQUIRED					

SW-4, 28 NOV 2024 to 26 DEC 2024

SW-4, 28 NOV 2024 to 26 DEC 2024