

WAAS CH 53522 W10A	APP CRS 105°	Rwy Idg TDZE Apt Elev	7001 318 331
--	------------------------	-----------------------------	---

RNAV (GPS) RWY 10

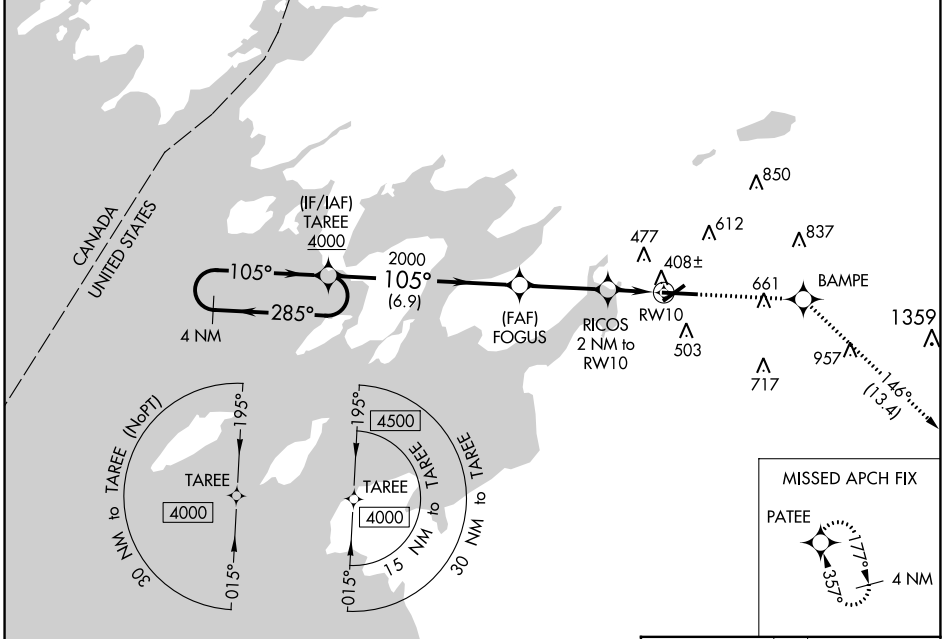
WATERTOWN INTL (ART)

RNP APCH.

T For uncompensated Baro-VNAV systems, LNAV/VNAV NA below -20°C or above 54°C. Rwy 10 helicopter visibility reduction below ¾ SM NA.

MISSED APPROACH: Climb to 3600 direct BAMPE and on track 146° to PATEE and hold.

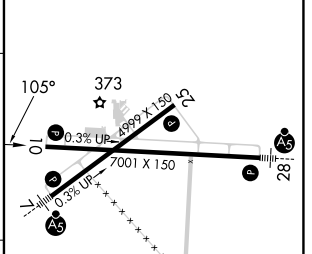
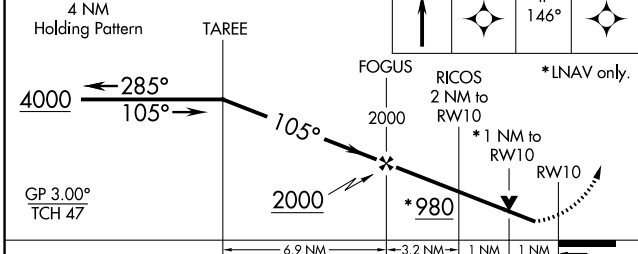
ASOS 132.325	KGTB ATIS 119.525	WHEELER-SACK APP CON 124.875 307.125	CLNC DEL 120.8	UNICOM 123.0 (CTAF)
------------------------	-----------------------------	--	--------------------------	-------------------------------



NE-2, 28 NOV 2024 to 26 DEC 2024

NE-2, 28 NOV 2024 to 26 DEC 2024

ELEV 331	D TDZE 318
----------	-------------------



CATEGORY	A	B	C	D
LPV DA		568-¾	250 (300-¾)	
LNAV/VNAV DA		578-¾	260 (300-¾)	
LNAV MDA		660-1	342 (400-1)	
C CIRCLING	960-1	629 (700-1)	980-1¼ 649 (700-1¼)	1080-2½ 749 (800-2½)

HIRL Rwy 7-25 **L**
MIRL Rwy 10-28 **L**