

LOC I-MTJ 111.3	APP CRS 168°	Rwy Idg TDZE Apt Elev	10000 5708 5759
---------------------------	------------------------	-----------------------------	--

ILS or LOC RWY 17

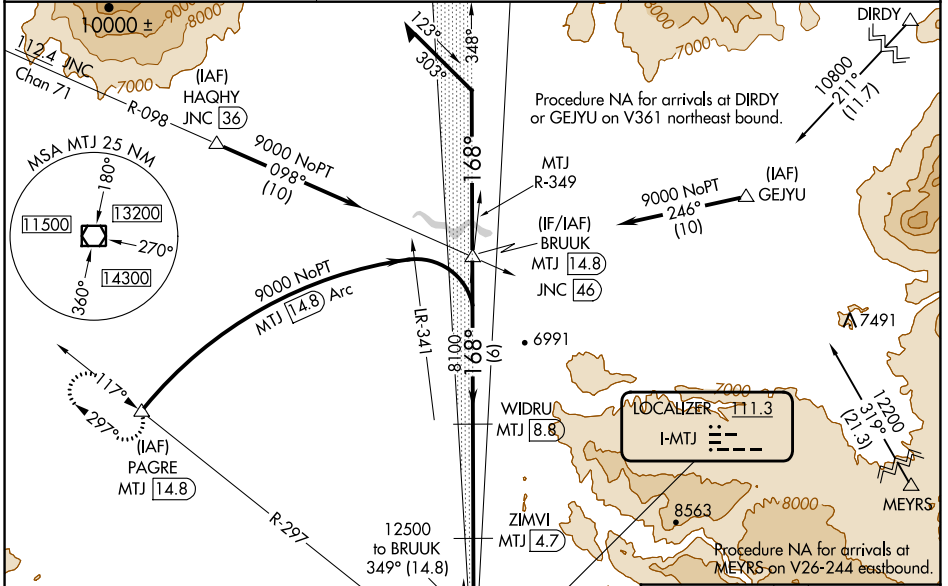
MONTROSE RGNL (MTJ)

From DIRDY, MYERS, GEJYU: RNAV 1-GPS required. DME required.

NA Circling NA east of Rwy 17 and northeast of Rwy 31. Circling Rwy 31 NA at night. When Circling to Rwy 13 at night, operational VGSI required, remain on or above VGSI glidepath until threshold. DME from MTJ VOR/DME. Simultaneous reception of I-MTJ and MTJ DME required. For inop ALS, increase S-LOC 17 Cat C/D visibility to 3/8 SM.

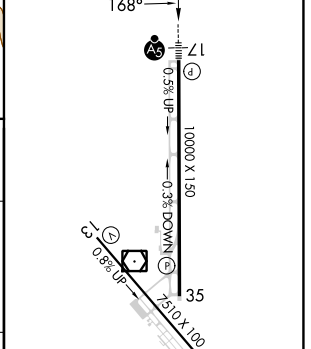
MALSR
AS
MISSED APPROACH: Climb to 6300 then climbing right turn to 11000 on heading 325° and MTJ VOR/DME R-297 to PAGRE/MTJ 14.8 DME and hold, continue climb-in-hold to 11000.

ASOS 135.225	DENVER CENTER 127.1 343.65	UNICOM 122.8 (CTAF)
------------------------	--------------------------------------	-------------------------------



Remain within 10 NM	BRUUK MTJ 14.8	6300	11000	MTJ	PAGRE
12500	348°	↑	hdg 325°	R-297	△
9000	168°	8100	ZIMVI MTJ 4.7	*LOC only	
GS 3.00° TCH 56		8100	MTJ 1.4		
		*6800			
		6 NM	4.1 NM	3.3 NM	

ELEV 5759	D	TDZE 5708
-----------	---	-----------



CATEGORY	A	B	C	D
S-ILS 17		5908-1/2	200 (200-1/2)	
S-LOC 17		6020-1/2	312 (300-1/2)	
C CIRCLING	6280-1 521 (600-1)	6320-1 561 (600-1)	6380-1 3/4 621 (700-1 3/4)	6800-3 1041 (1100-3)

REIL Rws 31, and 35
HIRL Rws 13-31 and 17-35

SW-1, 28 NOV 2024 to 26 DEC 2024

SW-1, 28 NOV 2024 to 26 DEC 2024