

WAAS CH 81938 W32A	APP CRS 326°	Rwy Idg TDZE Apt Elev 6329 2591 2596
--	------------------------	--

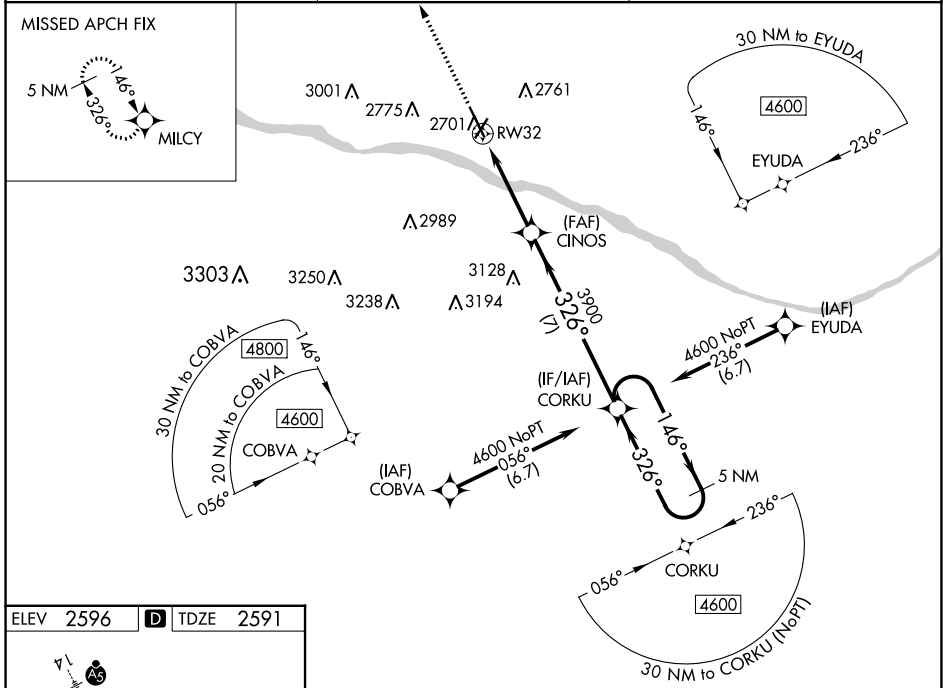
RNAV (GPS) RWY 32

DODGE CITY RGNL (DDC)

⚠ DME/DME RNP-0.3 NA. Baro-VNAV and VDP NA when using Garden City altimeter setting. For uncompensated Baro-VNAV systems, LNAV/VNAV NA below -19°C (-2°F) or above 54°C (130°F). When local altimeter setting not received, use Garden City altimeter setting: increase LPV DA to 2919 feet and all visibilities 3/8 miles, LNAV/VNAV DA to 2969 feet and all visibilities 3/8 mile; increase all MDA 140 feet and LNAV visibility Cat C and D 3/8 mile and Circling visibility Cat C and D 1/2 mile.

MISSED APPROACH:
Climb to 4600 direct MILCY and hold.

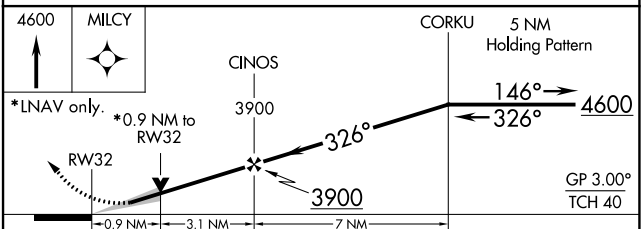
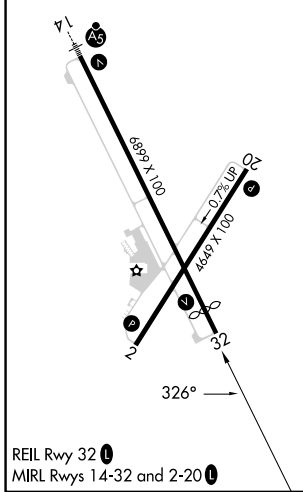
ASOS 118.525	KANSAS CITY CENTER 125.2 285.425	UNICOM 122.7 (CTAF) 0
------------------------	--	---------------------------------



NC-2, 28 NOV 2024 to 26 DEC 2024

NC-2, 28 NOV 2024 to 26 DEC 2024

ELEV 2596	D TDZE 2591
-----------	--------------------



CATEGORY	A	B	C	D
LPV DA		2791-3/4	200 (200-3/4)	
LNAV/VNAV DA		2841-7/8	250 (300-7/8)	
LNAV MDA		2920-1	329 (400-1)	
C CIRCLING	3040-1 444 (500-1)	3080-1 484 (500-1)	3320-2 724 (800-2)	3320-2 1/4 724 (800-2 1/4)