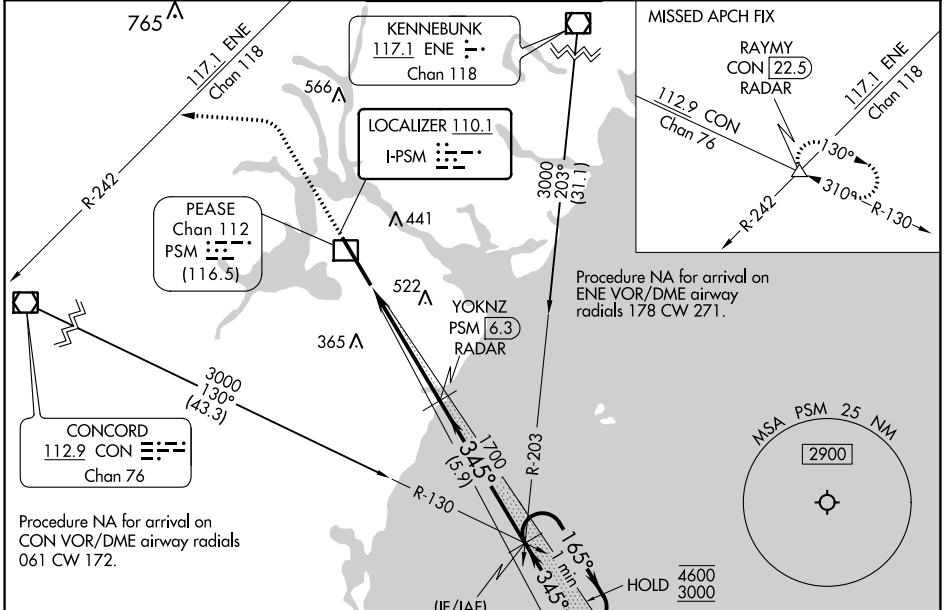


LOC I-PSM 110.1	APP CRS 345°	Rwy Idg TDZE Apt Elev	11321 84 100
---------------------------	------------------------	-----------------------------	---

ILS or LOC RWY 34

PORTSMOUTH INTL AT PEASE (PSM)

DME or RADAR required.		MALSR 	MISSED APPROACH: Climb to 1500 then dimbing left turn on heading 290° to 3000 and ENE VOR/DME R-242 to RAYMY INT/CON VOR/DME 22.5 DME/RADAR and hold.	
ATIS 132.05 273.5	BOSTON APP CON 125.05 269.4	PORTSMOUTH TOWER 128.4 269.0	GND CON 120.95 275.8	CLNC DEL 335.8



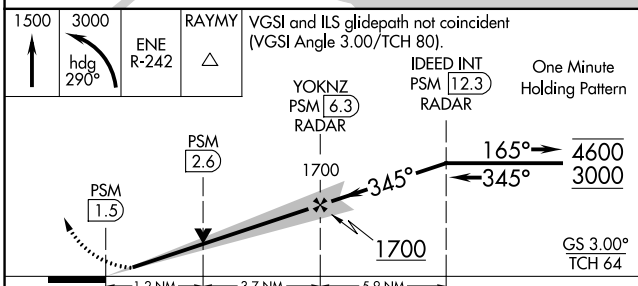
NE-1, 28 NOV 2024 to 26 DEC 2024

NE-1, 28 NOV 2024 to 26 DEC 2024

Procedure NA for arrival on ENE VOR/DME airway radials 178 CW 271.

Procedure NA for arrival on CON VOR/DME airway radials 061 CW 172.

Use of CON R-130 and ENE R-203 may be necessary to locate IDEED intersection.



ELEV 100	TDZE 84
1500	3000
hdg 290°	ENE R-242
RAYMY	△
VGSI and ILS glidepath not coincident (VGSI Angle 3.00/TCH 80).	
IDEED INT PSM [12.3] RADAR	One Minute Holding Pattern
YOKNZ PSM [6.3] RADAR	
PSM [2.6]	
1700	
165°	
345°	
4600	
3000	
GS 3.00°	TCH 64
1.2 NM	3.7 NM
5.9 NM	
CATEGORY	A B C D E
S-ILS 34	284/24 200 (200-½)
S-LOC 34	540/24 456 (500-½) 540/45 456 (500-¾)
CIRCLING	540-1 560-1 680-1½ 780-2¼ 800-2½
	440 (500-1) 460 (500-1) 580 (600-1½) 680 (700-2¼) 700 (700-2½)

ELEV 100	TDZE 84
1500	3000
hdg 290°	ENE R-242
RAYMY	△
VGSI and ILS glidepath not coincident (VGSI Angle 3.00/TCH 80).	
IDEED INT PSM [12.3] RADAR	One Minute Holding Pattern
YOKNZ PSM [6.3] RADAR	
PSM [2.6]	
1700	
165°	
345°	
4600	
3000	
GS 3.00°	TCH 64
1.2 NM	3.7 NM
5.9 NM	
CATEGORY	A B C D E
S-ILS 34	284/24 200 (200-½)
S-LOC 34	540/24 456 (500-½) 540/45 456 (500-¾)
CIRCLING	540-1 560-1 680-1½ 780-2¼ 800-2½
	440 (500-1) 460 (500-1) 580 (600-1½) 680 (700-2¼) 700 (700-2½)