

(TANKR3.TANKR) 23334

# TANKER THREE DEPARTURE

AL-678 (FAA)

PORTSMOUTH INTL AT PEASE (PSM)  
PORTSMOUTH, NEW HAMPSHIRE

ATIS  
132.05 273.5  
CLNC DEL  
335.8  
GND CON  
120.95 275.8  
PSM TOWER  
128.4 269.0  
BOSTON DEP CON  
125.05 269.4

**TOP ALTITUDE:  
3000**

CAMBRIDGE  
115.0 CAM  
Chan 97

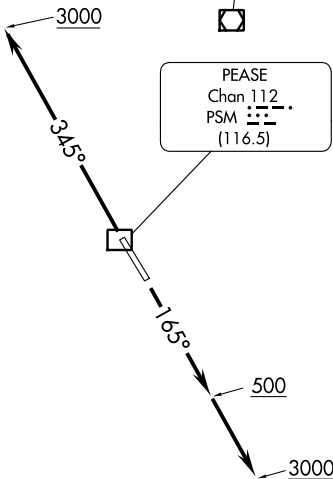
CONCORD  
112.9 CON  
Chan 76

KENNEBUNK  
117.1 ENE  
Chan 118

PEASE  
Chan 112  
PSM  
(116.5)

GARDNER  
116.95 GDM  
Chan 116 (Y)

BOSTON  
112.7 BOS  
Chan 74



SCUPP  $\Delta$

TAKEOFF MINIMUMS:  
Rwy 16, 34: Standard.

NOTE: RADAR required.

NOTE: Chart not to scale.

## DEPARTURE ROUTE DESCRIPTION

TAKEOFF RUNWAY 16: Climb on heading 165° to 500, continue climb to 3000 or as assigned by ATC, thence. . . .

TAKEOFF RUNWAY 34: Climb on heading 345° to 3000 or as assigned by ATC, thence. . . .

. . . . expect RADAR vectors to assigned route/navaid/fix. Expect further clearance to filed altitude/flight level 5 minutes after departure.

# TANKER THREE DEPARTURE

(TANKR3.TANKR) 22APR21

PORTSMOUTH, NEW HAMPSHIRE  
PORTSMOUTH INTL AT PEASE (PSM)

NE-1, 28 NOV 2024 to 26 DEC 2024

NE-1, 28 NOV 2024 to 26 DEC 2024