

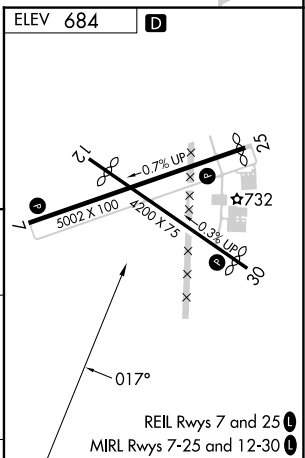
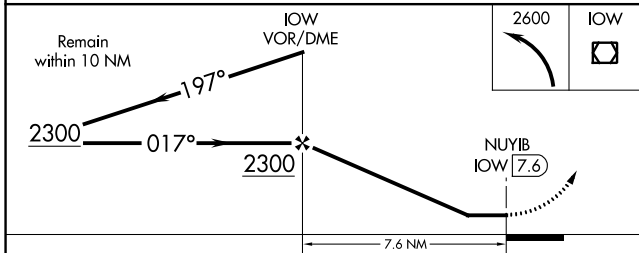
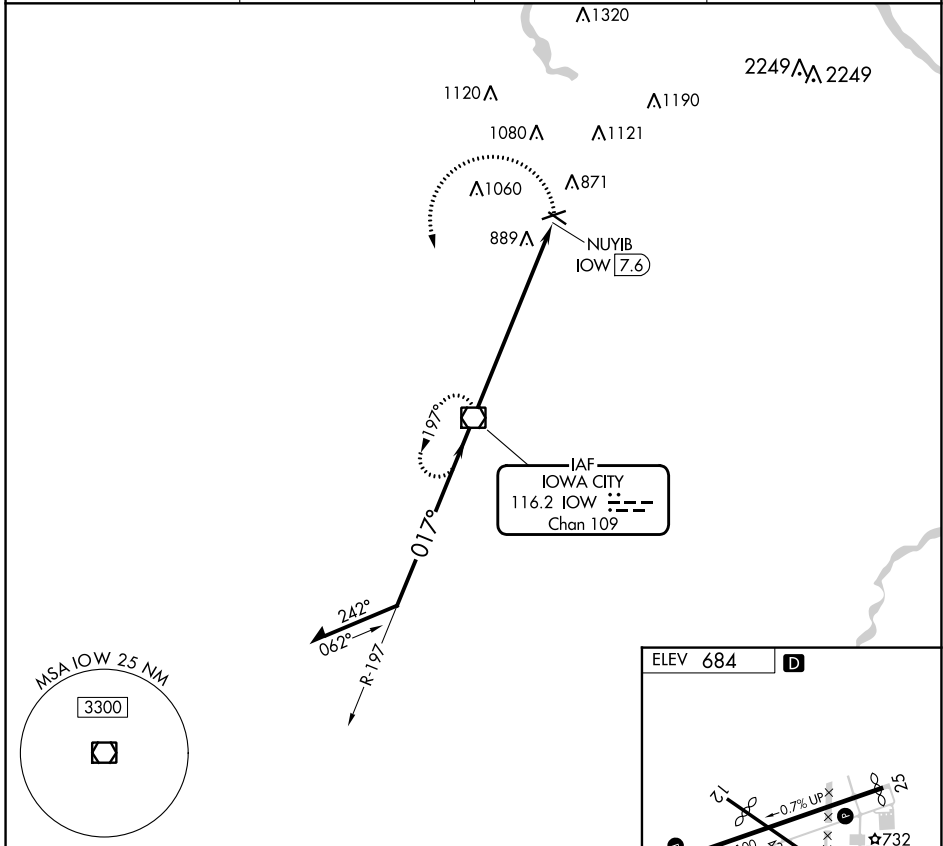
VOR/DME IOW <b>116.2</b> Chan <b>109</b>	APP CRS <b>017°</b>	Rwy Idg TDZE Apt Elev	<b>N/A</b> <b>N/A</b> <b>684</b>
--	------------------------	-----------------------------	--

**VOR-A**  
IOWA CITY MUNI (IOW)

**⚠** Circling Rwy 12, 30 NA at night. Rwy 12, 30 helicopter visibility reduction below 1 SM NA. When local altimeter setting not received, use CID altimeter setting and increase all MDAs 80 feet.

**MISSED APPROACH:** Climbing left turn to 2600 direct IOW VOR/DME and hold.

ASOS <b>128.075</b>	CEDAR RAPIDS APP CON * <b>119.7 266.8</b>	CLNC DEL <b>119.05</b>	UNICOM <b>122.8 (CTAF)</b> <b>📻</b>
------------------------	--	---------------------------	--



CATEGORY	A	B	C	D	FAF to MAP 7.6 NM					
CIRCLING	1300-1 616 (700-1)		NA		Knots	60	90	120	150	180
					Min:Sec	7:36	5:04	3:48	3:02	2:32

NC-3, 28 NOV 2024 to 26 DEC 2024

NC-3, 28 NOV 2024 to 26 DEC 2024