

WAAS CH 65805 W13A	APP CRS 131°	Rwy Idg TDZE Apt Elev	6502 1500 1500
--	------------------------	-----------------------------	---

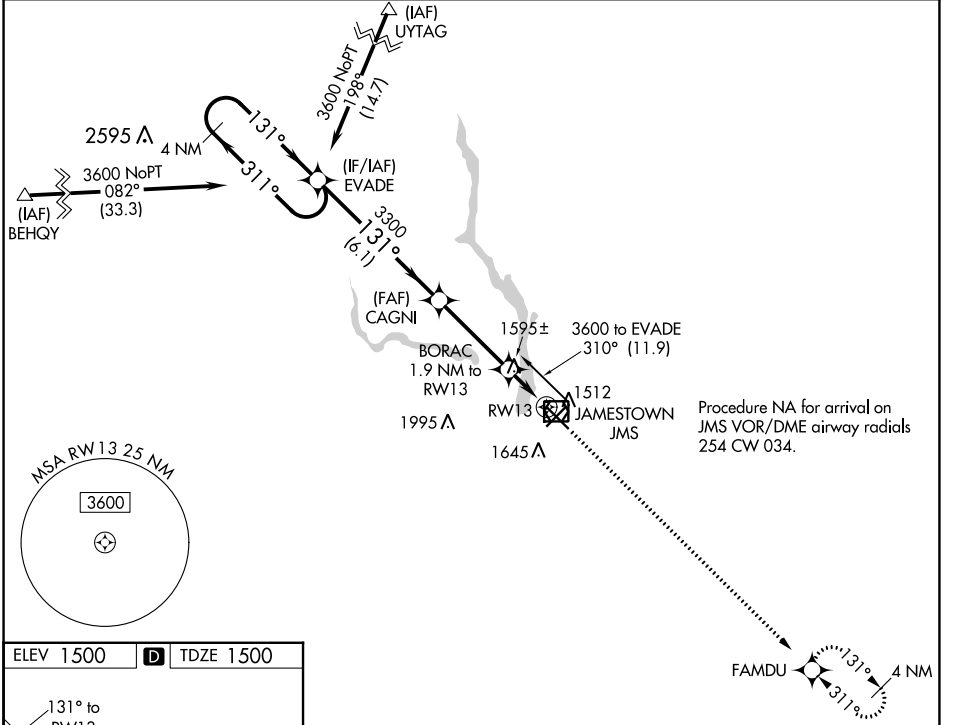
RNAV (GPS) RWY 13

JAMESTOWN RGNL (JMS)

⚠ For uncompensated Baro-VNAV systems, LNAV/VNAV NA below -21°C (-5°F) or above 54°C (130°F). Rwy 13 helicopter visibility reduction below ¾ SM NA. DME/DME RNP-0.3 NA.

MISSED APPROACH: Climb to 3500 direct FAMDU and hold.

ASOS 118.425	MINNEAPOLIS CENTER 124.2 270.3	UNICOM 123.0 (CTAF) 0
------------------------	--	---------------------------------



NC-1, 28 NOV 2024 to 26 DEC 2024

NC-1, 28 NOV 2024 to 26 DEC 2024

ELEV 1500	D	TDZE 1500
-----------	----------	-----------

MIRL Rwy 4-22 **0**
HIRL Rwy 13-31 **0**
REIL Rws 4, 13, and 22 **0**

4 NM Holding Pattern EVADE GP 3.00° TCH 52 3600 ← 311° → 131° → 1737° → CAGNI 3300 BORAC 1.9 NM to RW13 *1 NM to RW13 *LNAV only *2160 3500 ↑ FAMDU 6.1 NM 3.5 NM 0.9 NM 1 NM				
	CATEGORY LPV DA LNAV/VNAV DA LNAV MDA C CIRCLING	A	B	C
		1787-1	287 (300-1)	
		1820-1	320 (400-1)	
		1860-1	360 (400-1)	1860-1¼ 360 (400-1¼)
	1960-1	460 (500-1)	2000-1½ 500 (500-1½)	2300-2½ 800 (800-2½)