

WAAS CH <b>93716</b> <b>W22A</b>	APP CRS <b>224°</b>	Rwy Idg TDZE Apt Elev	<b>7008</b> <b>6817</b> <b>6817</b>
--	------------------------	-----------------------------	---

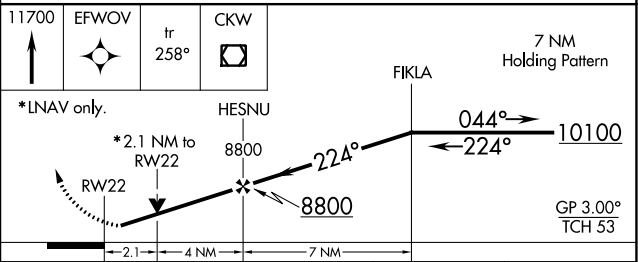
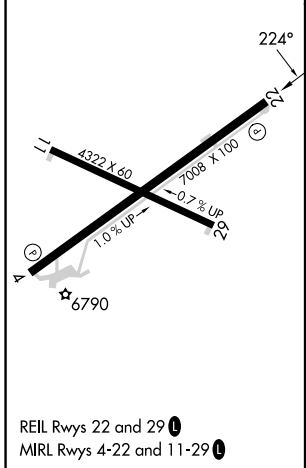
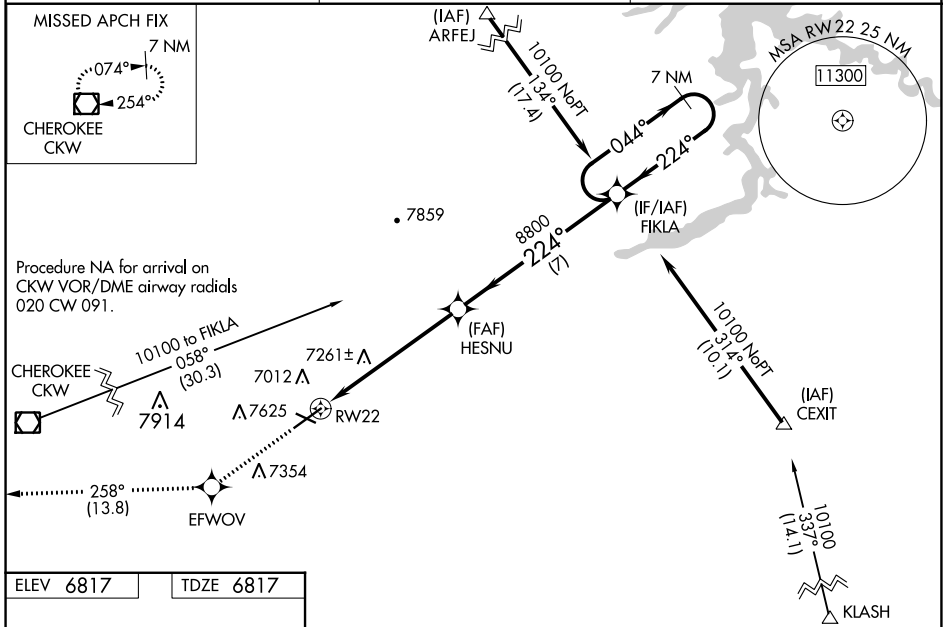
# RNAV (GPS) RWY 22

RAWLINS MUNI/HARVEY FLD (RWL)

**Baro-VNAV NA** when using Saratoga altimeter setting. For uncompensated Baro-VNAV systems, LNAV/VNAV NA below -28°C (-18°F) or above 44°C (111°F). Circling NA northwest of Rwy 4-22. DME/DME RNP-0.3 NA. VDP NA when using Saratoga altimeter setting. When local altimeter setting not received, use Saratoga altimeter setting and increase all DA 91 feet, and LPV visibility 3/8 mile, and LNAV/VNAV visibility 1 mile; increase all MDA 100 feet and LNAV visibility Cat B 1/4 mile, Cats C and D 1/2 mile, Circling visibility Cats B and C 1/4 mile. Helicopter visibility reduction below 3/4 SM NA.

**MISSED APPROACH:** Climb to 11700 direct EFWOV and on track 258° to CKW VOR/DME and hold, continue climb-in-hold to 11700.

ASOS <b>118.525</b>	DENVER CENTER <b>132.1 254.35</b>	UNICOM <b>123.0 (CTAF)</b>
------------------------	--------------------------------------	-------------------------------



CATEGORY	A	B	C	D
LPV DA		7131-1	314 (400-1)	
LNAV/VNAV DA		7637-3	820 (900-3)	
LNAV MDA	7520-1	703 (800-1)	7520-2	703 (800-2)
<b>C</b> CIRCLING	7520-1 703 (800-1)	7540-1 723 (800-1)	7660-2 1/2 843 (900-2 1/2)	7900-3 1083 (1100-3)

NW-1, 28 NOV 2024 to 26 DEC 2024

NW-1, 28 NOV 2024 to 26 DEC 2024