

# KREST THREE DEPARTURE

OAKLAND CENTER  
132.2 350.3  
ATIS  
124.1  
GND CON  
121.7  
REDDING TOWER ★  
119.8 (CTAF) 269.25

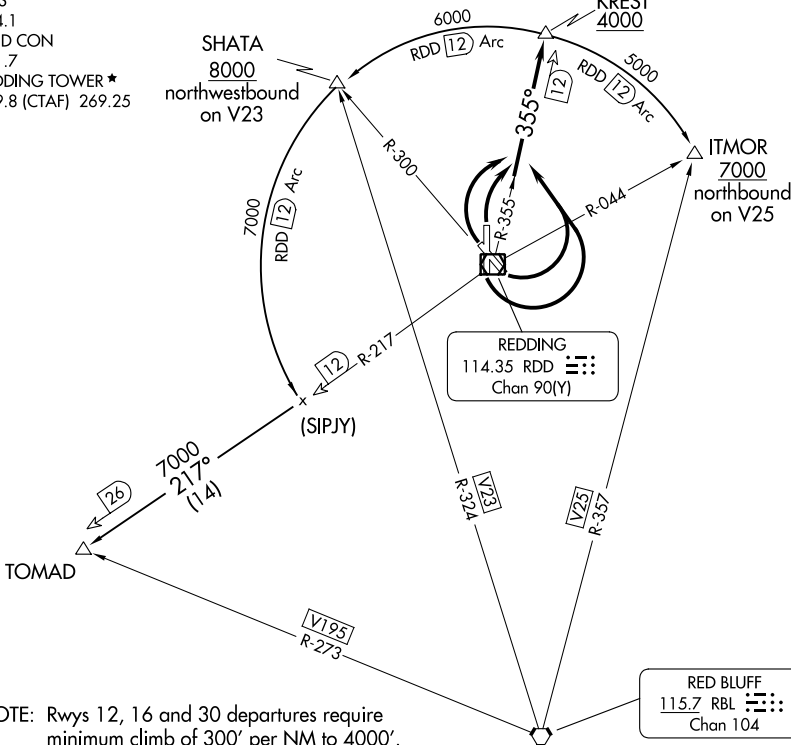
SHATA  
8000  
northwestbound  
on V23

KREST  
4000

ITMOR  
7000  
northbound  
on V25

REDDING  
114.35 RDD  
Chan 90(Y)

RED BLUFF  
115.7 RBL  
Chan 104



- NOTE: Rwsys 12, 16 and 30 departures require minimum climb of 300' per NM to 4000'.
- NOTE: Rwy 34 departure requires minimum climb of 320' per NM to 4000'.
- NOTE: DME required.

NOTE: Chart not to scale.

## DEPARTURE ROUTE DESCRIPTION

TAKEOFF RUNWAYS 12 and 16: Turn left immediately after departure to intercept and proceed on the RDD R-355 to KREST DME Fix. Cross KREST DME Fix at or above 4000, thence on (transition) or (assigned route).

TAKEOFF RUNWAYS 30 and 34: Turn right immediately after departure to intercept and proceed on RDD R-355 to KREST DME Fix. Cross KREST DME Fix at or above 4000, thence on (transition) or (assigned route).

ITMOR TRANSITION (KREST3.ITMOR): From over KREST DME Fix on RDD 12 DME Arc clockwise to ITMOR INT.

SHATA TRANSITION (KREST3.SHATA): From over KREST DME Fix on RDD 12 DME Arc counterclockwise to SHATA INT.

TOMAD TRANSITION (KREST3.TOMAD): From over KREST DME Fix on RDD 12 DME Arc counterclockwise to RDD R-217, thence on RDD R-217 to TOMAD INT.

# KREST THREE DEPARTURE

SW-2, 28 NOV 2024 to 26 DEC 2024

SW-2, 28 NOV 2024 to 26 DEC 2024