

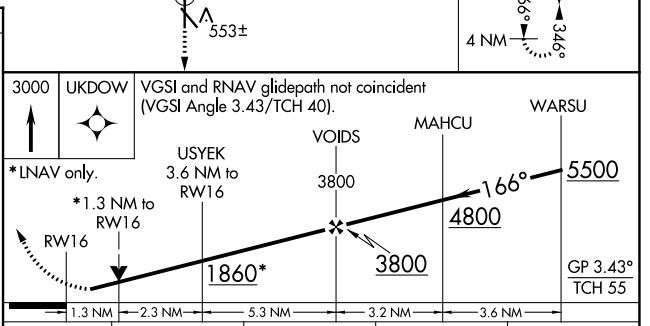
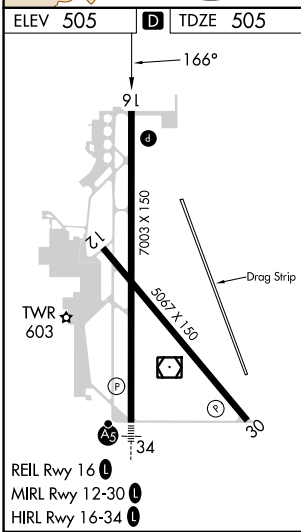
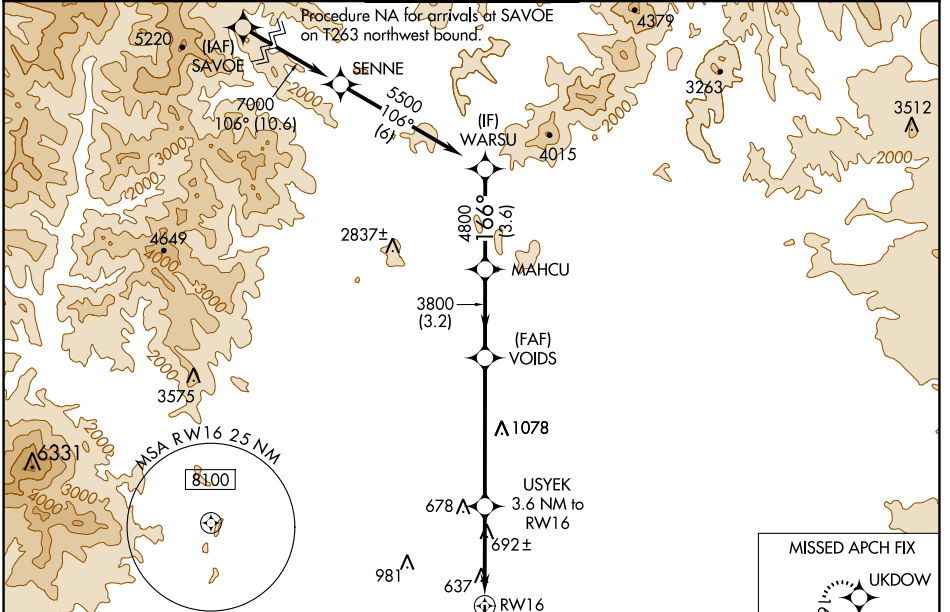
WAAS CH 86443 W16A	APP CRS 166°	Rwy Idg 7003 TDZE 505 Apt Elev 505
--	------------------------	---

RNAV (GPS) RWY 16

REDDING RGNL (RDD)

RNP APCH.	MISSED APPROACH: Climb to 3000 direct UKDOW and hold.
<p>▼ Rwy 16 helicopter visibility reduction below 3/4 SM NA. ▲ For uncompensated Baro-VNAV systems, LNAV/VNAV NA below -4°C or above 53°C.</p>	

ATIS 124.1	OAKLAND CENTER 132.2 350.3	REDDING TOWER * 119.8 (CTAF) 0 269.25	GND CON 121.7	UNICOM 122.95
----------------------	--------------------------------------	---	-------------------------	-------------------------



CATEGORY	A	B	C	D
LPV DA	755-3/4	250 (300-3/4)	775-7/8	270 (300-7/8)
LNAV/VNAV DA	892-1 1/8 387 (400-1 1/8)			
LNAV MDA	960-1	455 (500-1)	960-1 3/8	455 (500-1 1/8)
C CIRCLING	960-1 455 (500-1)	1000-1 495 (500-1)	1120-1 3/4 615 (700-1 3/4)	1340-2 3/4 835 (900-2 3/4)

SW-2, 28 NOV 2024 to 26 DEC 2024

SW-2, 28 NOV 2024 to 26 DEC 2024