

(LOUPE1.BMRNG) 24137

# LOUPE ONE DEPARTURE (RNAV)

NORMAN Y MINETA SAN JOSE INTL (SJC)  
SAN JOSE, CALIFORNIA

AL-693 (FAA)

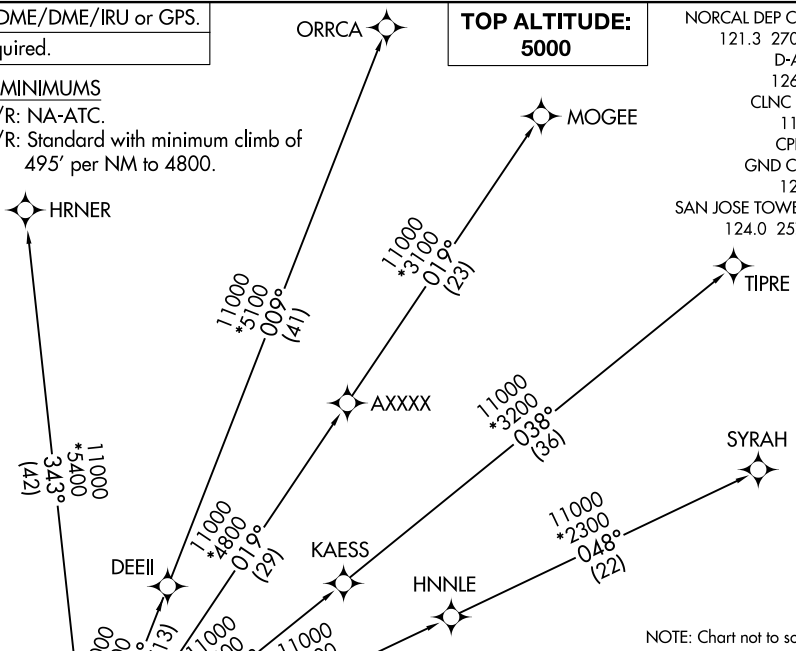
RNAV 1 - DME/DME/IRU or GPS.  
RADAR required.

**TOP ALTITUDE:  
5000**

NORCAL DEP CON 121.3 270.35  
D-ATIS 126.95  
CLNC DEL 118.0  
CPDLC  
GND CON 121.7  
SAN JOSE TOWER\* 124.0 257.6

### TAKEOFF MINIMUMS

Rwys 12L/R: NA-ATC.  
Rwys 30L/R: Standard with minimum climb of 495' per NM to 4800.



NOTE: Chart not to scale.

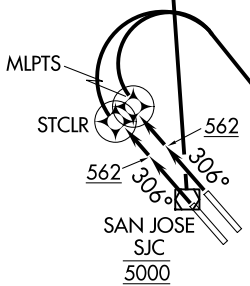
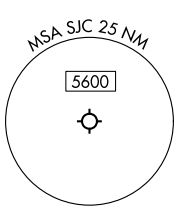
**DEPARTURE ROUTE DESCRIPTION**

**TAKEOFF RUNWAY 30L:** Climb on heading 306° to 562, then direct STCLR, then right turn direct LOUPE at 5000 at or below 230K, then on track 130°, for vectors to SJC VOR/DME, then on track 343° to BMRNG. Thence. . .

**TAKEOFF RUNWAY 30R:** Climb on heading 306° to 562, then direct MLPTS, then right turn direct LOUPE at 5000 at or below 230K, then on track 130°, for vectors to SJC VOR/DME, then on track 343° to BMRNG. Thence. . .

. . . on (transition). Maintain 5000, expect filed altitude 10 minutes after departure

HRNER TRANSITION (LOUPE1.HRNER)  
MOGEE TRANSITION (LOUPE1.MOGEE)  
ORRCA TRANSITION (LOUPE1.ORRCA)  
SYRAH TRANSITION (LOUPE1.SYRAH)  
TIPRE TRANSITION (LOUPE1.TIPRE)



NOTE: Do not turn direct SJC VOR/DME until instructed to do so by ATC.

SW-2, 28 NOV 2024 to 26 DEC 2024

SW-2, 28 NOV 2024 to 26 DEC 2024

LOUPE ONE DEPARTURE (RNAV)  
(LOUPE1.BMRNG) 16MAY24

SAN JOSE, CALIFORNIA  
NORMAN Y MINETA SAN JOSE INTL (SJC)