

# RAZRR FIVE ARRIVAL (RNAV)

## Arrival Routes

SAN JOSE, CALIFORNIA

SW-2, 28 NOV 2024 to 26 DEC 2024

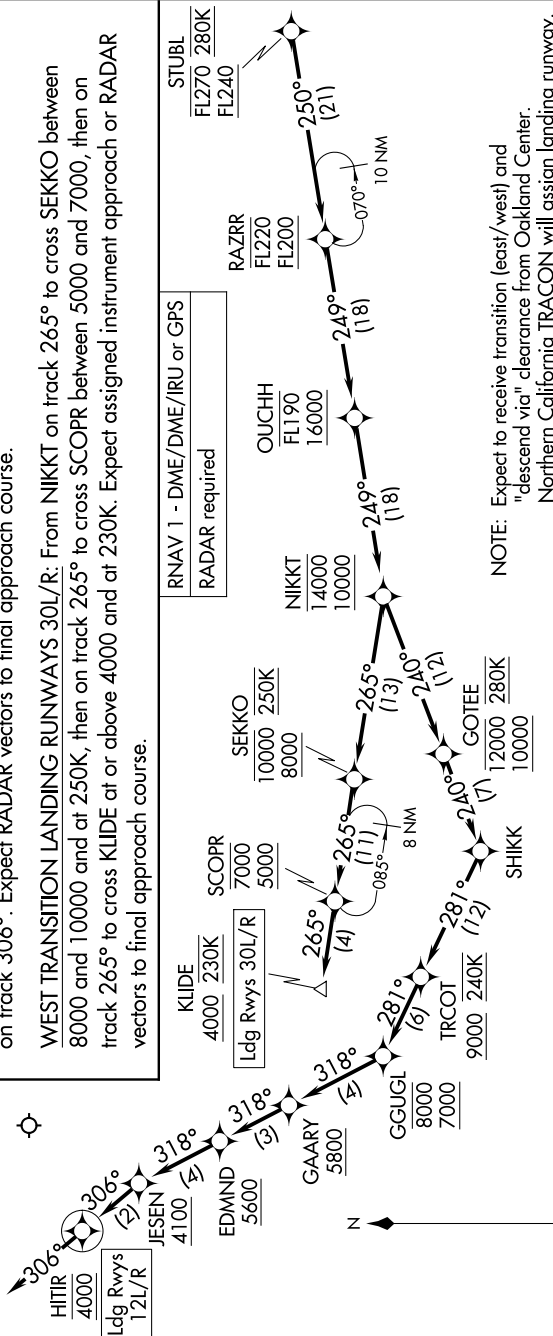
### ARRIVAL ROUTE DESCRIPTION

From STUBL on track 250° to cross RAZRR between FL200 and FL220, then on track 249° to cross OUCHH between 16000 and FL190, then on track 249° to cross NIKKT between 10000 and 14000.

**EAST TRANSITION LANDING RUNWAYS 12L/R:** From NIKKT on track 240° to cross GOTEE between 10000 and 12000 and at 280K, then on track 240° to SHIKK, then on track 281° to cross TRCOT at or above 9000 and at 240K, then on track 281° to cross GGUGL between 7000 and 8000, then on track 318° to cross GAARY at or above 5800, then on track 318° to cross EDMND at or above 5600, then on track 318° to cross JESEN at or above 4100, then on track 306° to cross HITIR at 4000, then on track 306°. Expect RADAR vectors to final approach course.

**WEST TRANSITION LANDING RUNWAYS 30L/R:** From NIKKT on track 265° to cross SEKKO between 8000 and 10000 and at 250K, then on track 265° to cross SCOPR between 5000 and 7000, then on track 265° to cross KLIDE at or above 4000 and at 230K. Expect assigned instrument approach or RADAR vectors to final approach course.

OAKLAND CENTER  
121.25 327.0  
NORCAL APP CON  
126.475 317.775  
D-ATIS  
126.95  
SAN JOSE TOWER\*  
124.0 257.6  
GND CON  
121.7



RNAV 1 - DME/DME/IRU or GPS  
RADAR required

**NOTE:** Expect to receive transition (east/west) and "descend via" clearance from Oakland Center. Northern California TRACON will assign landing runway.  
**NOTE:** West transition indicates Rwy 30L/R.  
**NOTE:** East transition indicates Rwy 12L/R.  
**NOTE:** Expect west transition unless otherwise advised.

NOTE: Chart not to scale.

# RAZRR FIVE ARRIVAL (RNAV)

## Arrival Routes

SAN JOSE, CALIFORNIA

SW-2, 28 NOV 2024 to 26 DEC 2024