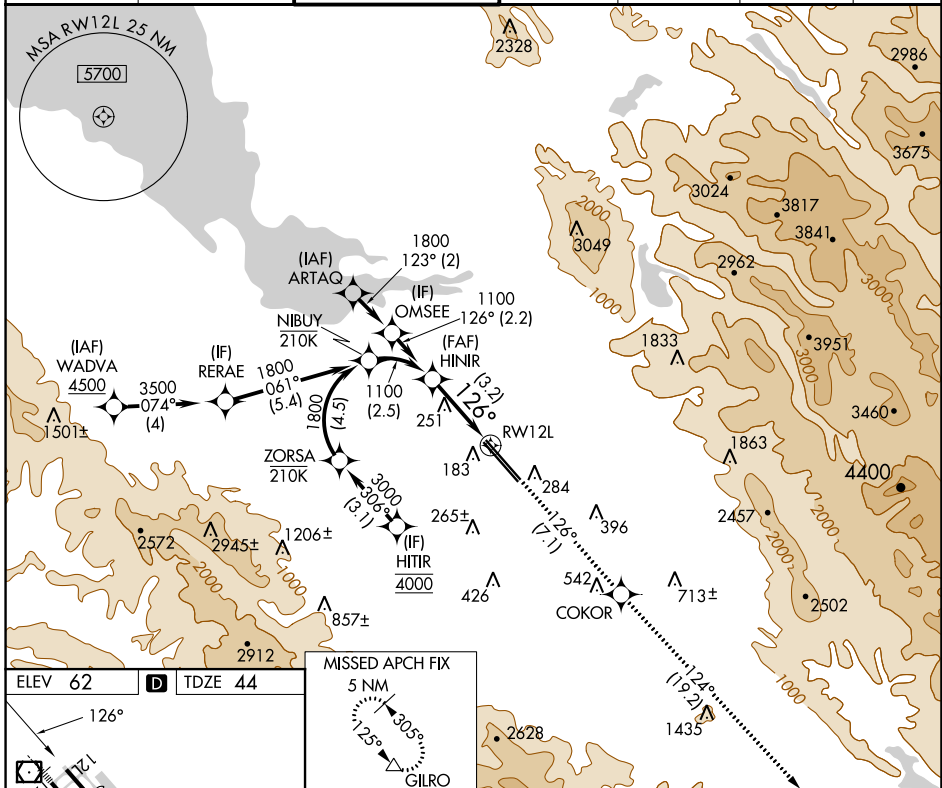


APP CRS 126°	Rwy Idg 8831
	TDZE 44
	Apt Elev 62

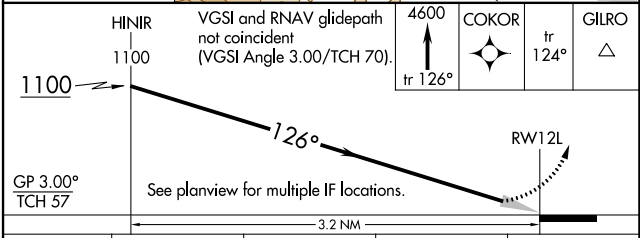
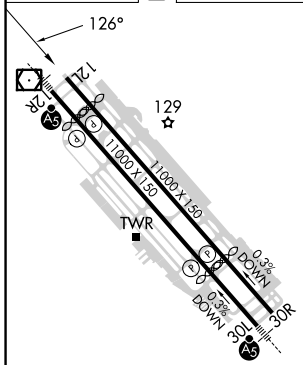
RNAV (RNP) Z RWY 12L

NORMAN Y MINETA SAN JOSE INTL (SJC)

RNP AR APCH-GPS.			MISSED APPROACH: Climb to 4600 on track 126° to COKOR and track 124° to GILRO and hold.						
▼ For uncompensated Baro-VNAV systems, procedure NA below 0°C or above 54°C.			D-ATIS 126.95	NORCAL APP CON 120.1 290.25	SAN JOSE TOWER* 124.0 (CTAF) 0 257.6	GND CON 121.7	CLNC DEL 118.0	CPDLC	UNICOM 122.95



ELEV 62	D	TDZE 44
---------	----------	---------



CATEGORY	A	B	C	D
RNP 0.18 DA		400-1	356 (400-1)	
RNP 0.30 DA		451-1 1/8	407 (400-1 1/8)	

AUTHORIZATION REQUIRED

SW-2, 28 NOV 2024 to 26 DEC 2024

SW-2, 28 NOV 2024 to 26 DEC 2024