

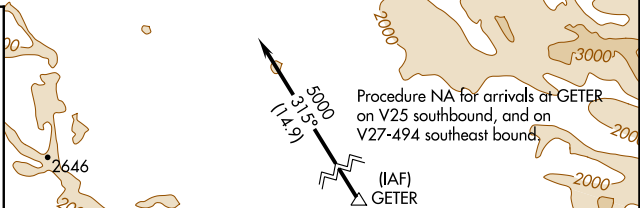
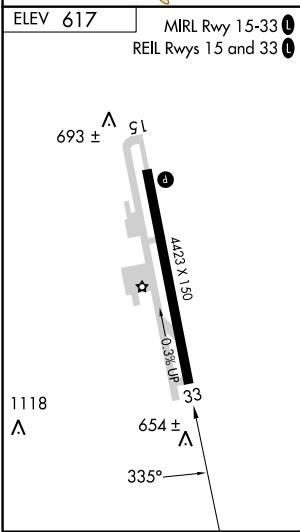
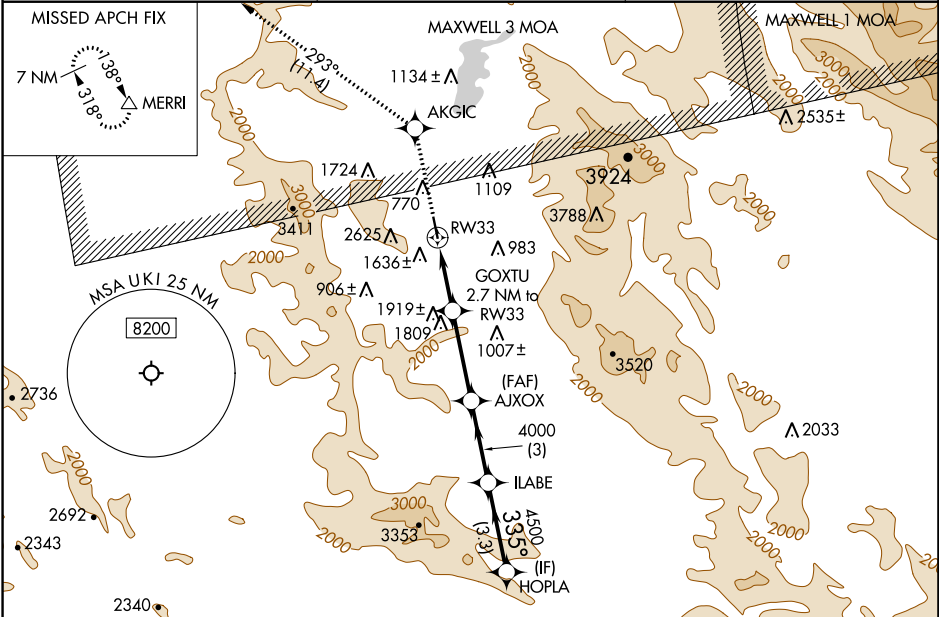
APP CRS 335°	Rwy Idg TDZE Apt Elev 617	N/A N/A 617
------------------------	---	--------------------------

RNAV (GPS)-B

UKIAH MUNI (UKI)

RNP APCH - GPS.		MISSED APPROACH: Climb to 6700 direct AKGIC and on track 293° to MERRI and hold, continue climb-in-hold to 6700.
▽ Circling NA southwest of Rwy 15-33. Circling Rwy 33 NA at night.	⚠ Rwy 33 helicopter visibility reduction below 1 SM NA. When local altimeter setting not received, procedure NA.	

ASOS 119.275	OAKLAND CENTER 127.8 353.5	UNICOM 123.0 (CTAF) 0
------------------------	--------------------------------------	---------------------------------



6700	AKGIC	tr 293°	MERRI	HOPLA	
				AJXOX	ILABE
GOXTU 2.7 NM to RW33				5000	
RW33	7.62° TCH 40	2840	4000	4500	5000
2.7 NM		3.3 NM		3.3 NM	
CATEGORY	A	B	C	D	
ⓐ CIRCLING	2080-1¼ 1463 (1500-1¼)	2100-1½ 1483 (1500-1½)	2140-3 1523 (1600-3)	2780-3 2163 (2200-3)	

SW-2, 28 NOV 2024 to 26 DEC 2024

SW-2, 28 NOV 2024 to 26 DEC 2024