

HI-ILS Y or LOC Y RWY 18

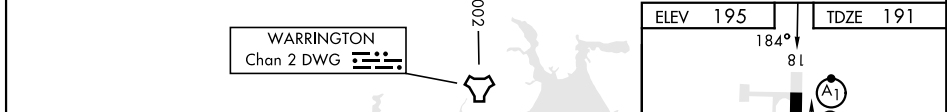
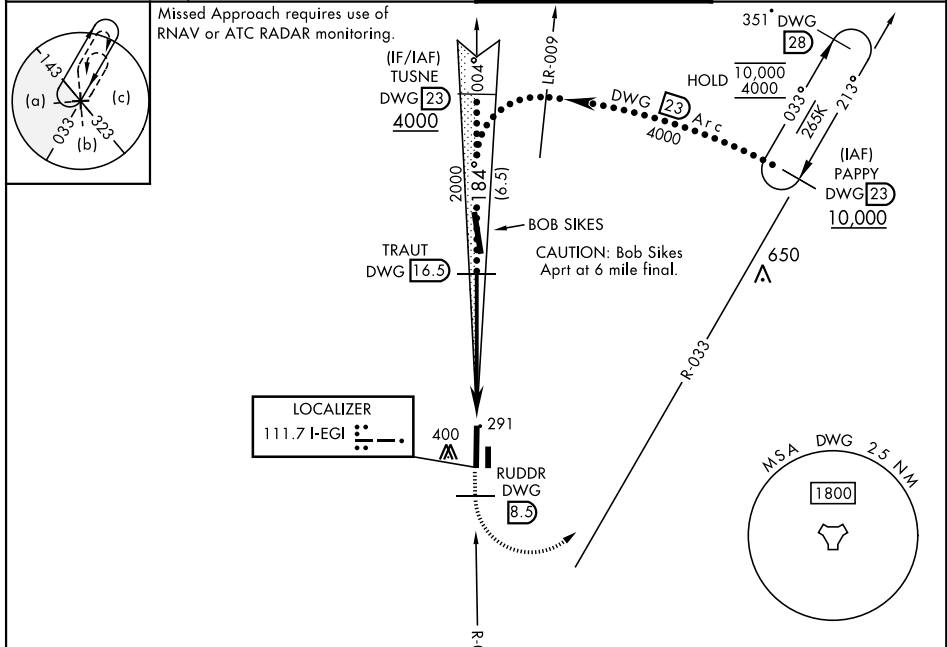
LOC I-EGI 111.7	APCH CRS 184°	Rwy Idg 8025 TDZE 191 Arprt Elev 195	AL-699 [USAF]	DUKE FLD (EGLIN AF AUX NR3) (KEGI)
---------------------------	-------------------------	---	---------------	------------------------------------

* When ALS inop, increase RVR to 40, vis to 3/4 mile.
 ** When ALS inop, increase RVR to 55, vis to 1 mile.

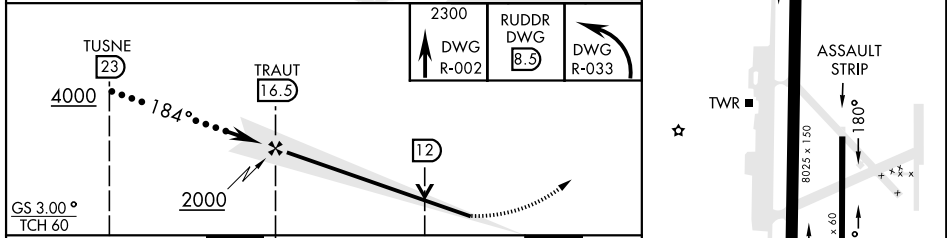
ALSF-1

MISSED APPROACH: Climb on DWG R-002 to 8.5 DME (RUDDR), then climbing left turn to 2300 direct DWG R-033/23 DME (PAPPY) and hold.

ATIS ★ 244.575	EGLIN APP CON 125.1 281.45 (271°-089°) 132.1 360.6 (090°-270°)	TOWER ★ 133.2 290.425	GND CON 123.25 251.125
--------------------------	--	---------------------------------	----------------------------------



EMERG SAFE ALT 100 NM 3500



CATEGORY	C	D	E
S-ILS 18 *	391/24	200 (200-1/2)	
S-LOC 18 **	540/24	349 (400-3/4)	
CIRCLING	700-1 1/2 505 (600-1 1/2)	760-2 565 (600-2)	780-2 585 (600-2)

ELEV 195	TDZE 191
184°	81
A1	P
TWR	ASSAULT STRIP
3600 x 60	180°
8025 x 150	360°
HIRL Rwy 18-36 36	
FAF to MAP 5.5 NM	
Knots	120 140 160 180 200
Min:Sec	2:45 2:21 2:04 1:50 1:39

HI-ILS Y or LOC Y RWY 18

SE-3, 28 NOV 2024 to 26 DEC 2024

SE-3, 28 NOV 2024 to 26 DEC 2024