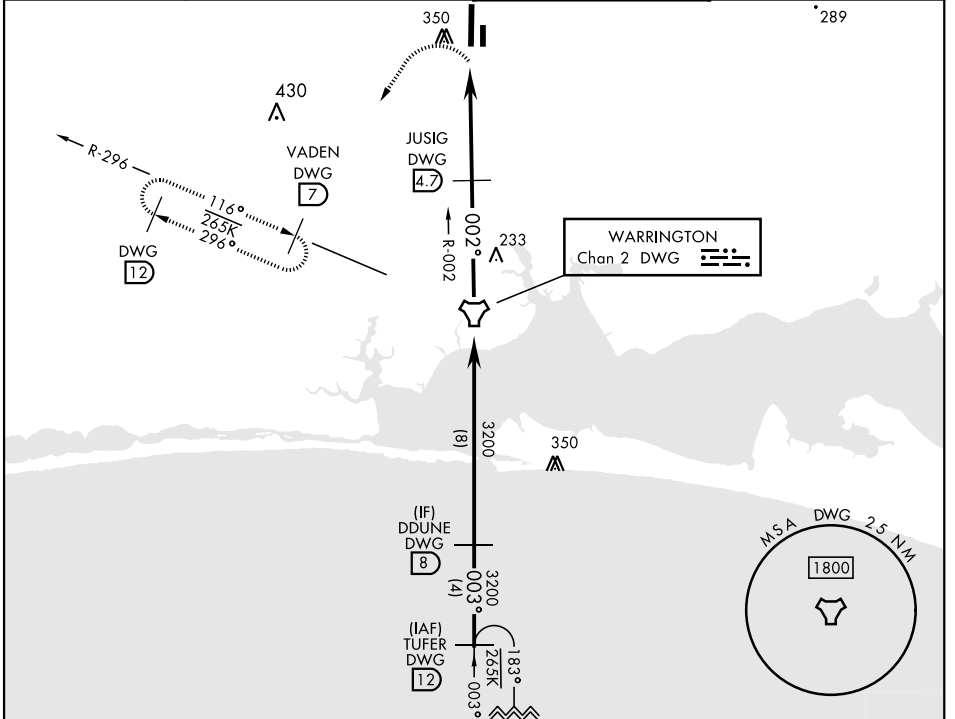


TACAN Z RWY 36

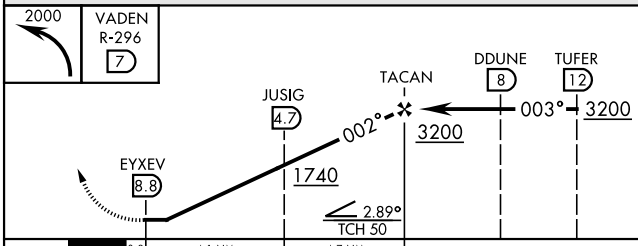
TACAN DWG Chan 2	APCH CRS 002°	Rwy Idg TDZE Arprt Elev 8025 191 195	AL-699 [USAF]	DUKE FLD (EGLIN AF AUX NR3)	(KEGI)
----------------------------	-------------------------	--	---------------	-----------------------------	--------

MISSED APPROACH: Climbing left turn to 2000 direct DWG R-296/7 DME (VADEN) and hold.
Missed Approach requires use of RNAV or ATC RADAR monitoring.

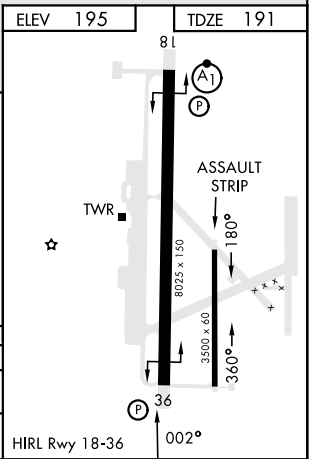
ATIS ★ 244.575	EGLIN APP CON 125.1 281.45 (271°-089°) 132.1 360.6 (090°-270°)	TOWER ★ 133.2 290.425	GND CON 123.25 251.125
--------------------------	--	---------------------------------	----------------------------------



EMERG SAFE ALT 100 NM 3500



CATEGORY	A	B	C	D	E
S-36	600/55	409 (500-1)	600/60	409	(500-1½)
CIRCLING	660-1 465 (500-1)	700-1 505 (600-1)	700-1½ 505 (600-1½)	760-2 565 (600-2)	780-2 585 (600-2)



TACAN Z RWY 36

SE-3, 28 NOV 2024 to 26 DEC 2024

SE-3, 28 NOV 2024 to 26 DEC 2024