

APP CRS	Rwy Idg	6157
146°	TDZE	77
	Apt Elev	81

RNAV (RNP) Z RWY 14

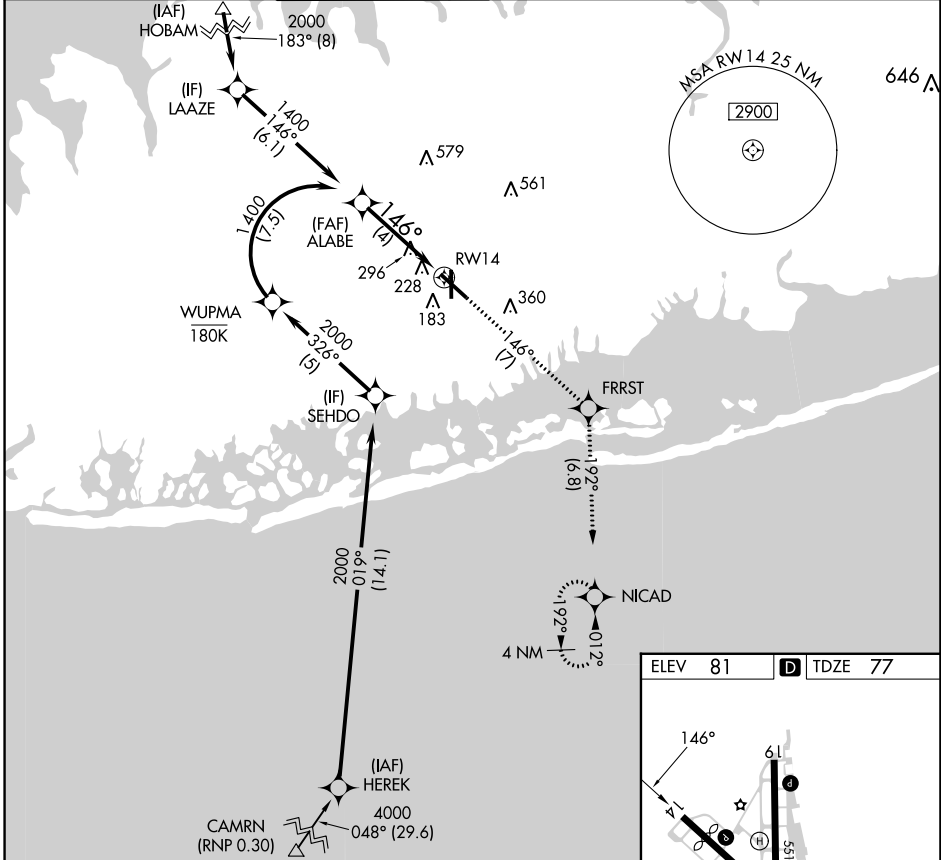
REPUBLIC (F'RG)

RNP AR APCH. RF required from HEREK.

▼ For uncompensated Baro-VNAV systems, procedure NA below -12°C or above 48°C.

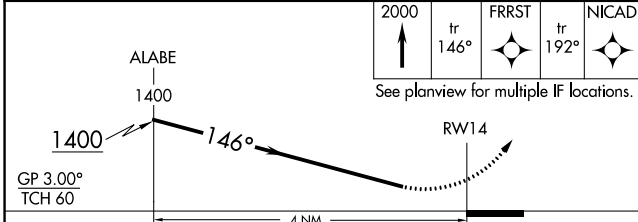
MISSED APPROACH: Climb to 2000 on track 146° to FRRST and on track 192° to NICAD and hold.

ATIS	NEW YORK APP CON	REPUBLIC TOWER ★	GND CON	CLNC DEL	CLNC DEL	UNICOM
126.65	128.125 269.0	118.8 (CTAF) 0 279.65	121.6 269.6	128.25	128.25 (When twr closed)	122.95



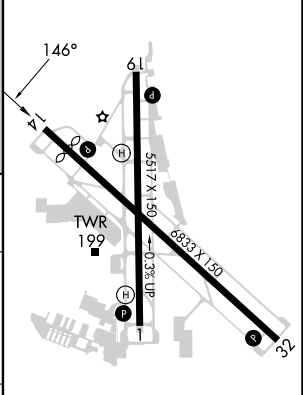
NE-2, 28 NOV 2024 to 26 DEC 2024

NE-2, 28 NOV 2024 to 26 DEC 2024



CATEGORY	A	B	C	D
RNP 0.30 DA		525-1 ³ / ₈	447 (500-1 ³ / ₈)	

ELEV 81	TDZE 77
---------	---------



MIRL Rwy 1-19
 HIRL Rwy 14-32
 REIL Rwy 1, 19, and 32