

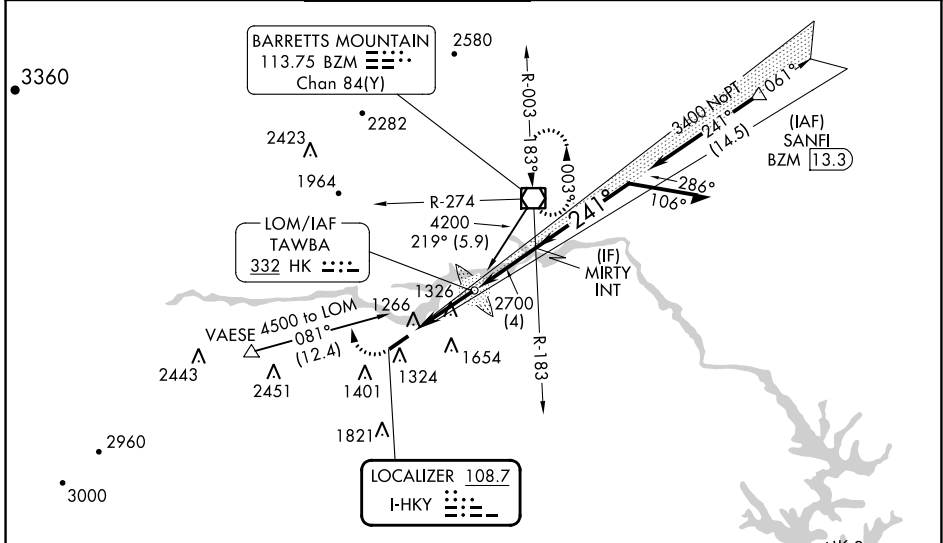
LOC I-HKY 108.7	APP CRS 241°	Rwy Idg TDZE Apt Elev	6401 1190 1190
---------------------------	------------------------	-----------------------------	---

ILS or LOC RWY 24

HICKORY RGNL (HKY)

	For inop ALS, increase S-LOC 24 Cat C and D visibility 1/8 SM.	MALSR 	MISSED APPROACH: Climb to 1700 then climbing right turn to 4000 on heading 340° and on BZM VOR/DME R-274 to BZM VOR/DME and hold.
--	--	-----------	---

ASOS 118.325	ATLANTA CENTER 125.15 263.0	HICKORY TOWER ★ 128.15 (CTAF) 0	GND CON 121.7	CLNC DEL 121.7	CLNC DEL 124.25 (When twr closed)
------------------------	---------------------------------------	---	-------------------------	--------------------------	--



SE-2, 28 NOV 2024 to 26 DEC 2024

SE-2, 28 NOV 2024 to 26 DEC 2024

ELEV 1190	D	TDZE 1190
-----------	----------	-----------

ALTERNATE MISSED APCH FIX

MSA HK 25 NM (5800)

1700 ↑	4000 hdg 340°	BZM R-274	BZM HK LOM TAWBA	Remain within 10 NM
-----------	---------------------	--------------	---------------------	---------------------

CATEGORY	A	B	C	D
S-ILS 24	1390-1/2		200 (200-1/2)	
S-LOC 24	1580-1/2	390 (400-1/2)	1580-5/8	390 (400-5/8)
C CIRCLING	1640-1 450 (500-1)	1660-1 470 (500-1)	2020-2 1/2 830 (900-2 1/2)	2040-2 3/4 850 (900-2 3/4)