

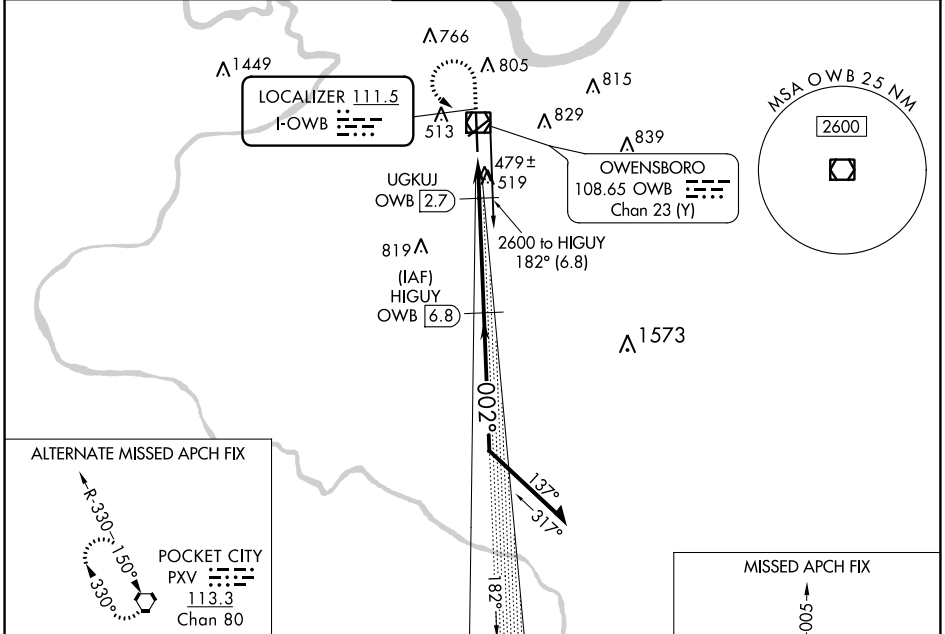
LOC I-OWB 111.5	APP CRS 002°	Rwy Idg 8000
		TDZE 401
		Apt Elev 407

ILS or LOC RWY 36

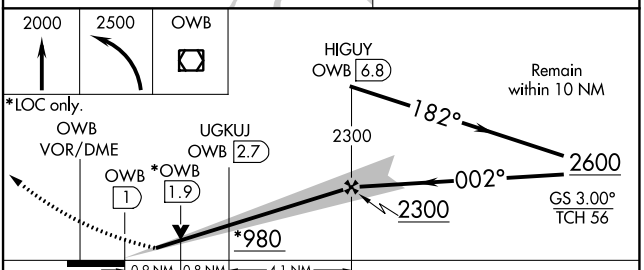
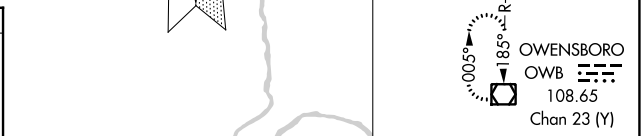
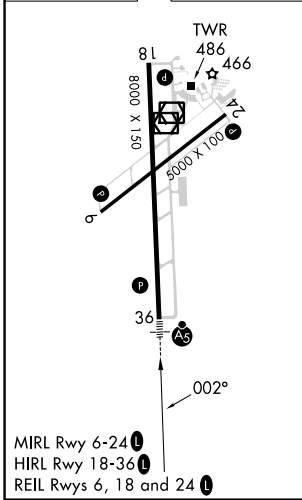
OWENSBORO/DAVISS COUNTY RGNL (OWB)

DME required.		MALSR	MISSED APPROACH: Climb to 2000 then climbing left turn to 2500 direct OWB VOR/DME and hold, continue climb-in-hold to 2500.	

AWOS-3PT 119.025	EVANSVILLE APP CON * 124.025 290.9	OWENSBORO TOWER * 120.7 (CTAF) 251.15	GND CON 121.7	UNICOM 122.95
----------------------------	--	---	-------------------------	-------------------------



ELEV 407	D	TDZE 401
-----------------	----------	-----------------



CATEGORY	A	B	C	D
S-ILS 36		601-1/2	200 (200-1/2)	
S-LOC 36		740-1/2	339 (400-1/2)	
CIRCLING	860-1 453 (500-1)	1120-1 713 (800-1)	1140-2 733 (800-2)	1140-2 1/4 733 (800-2 1/4)

ILS or LOC RWY 36

SE-1, 28 NOV 2024 to 26 DEC 2024

SE-1, 28 NOV 2024 to 26 DEC 2024