

LOC/DME I-CMI <b>109.1</b> Chan 28	APP CRS <b>319°</b>	Rwy Idg TDZE Apt Elev <b>8101</b> <b>750</b> <b>755</b>
--	------------------------	--

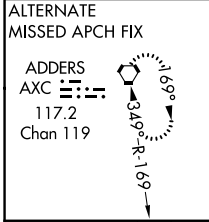
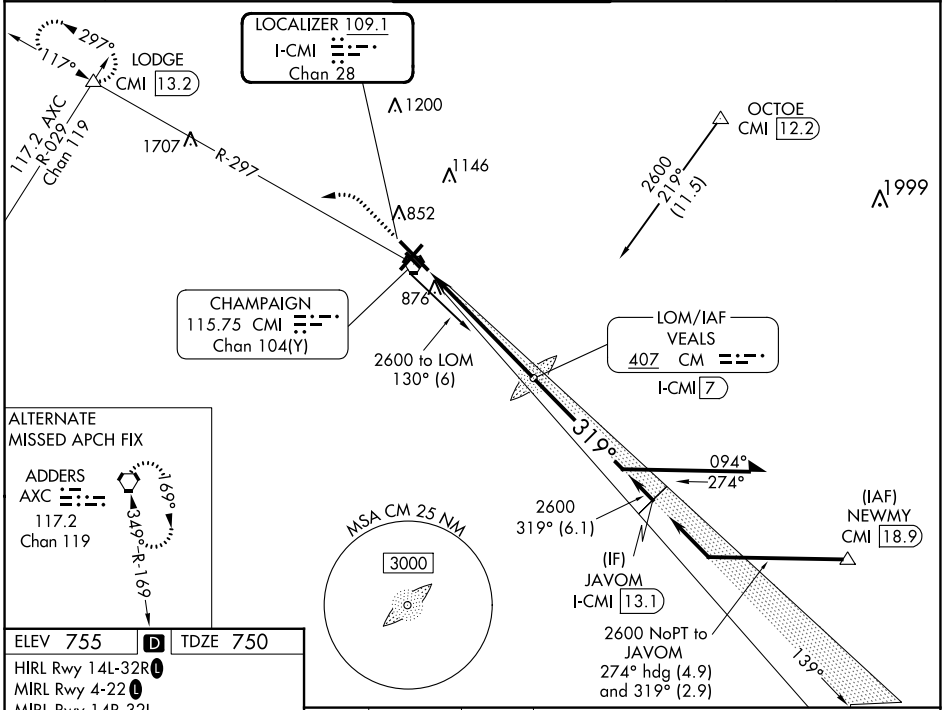
# ILS or LOC RWY 32R

UNIVERSITY OF ILLINOIS/WILLARD (CMI)

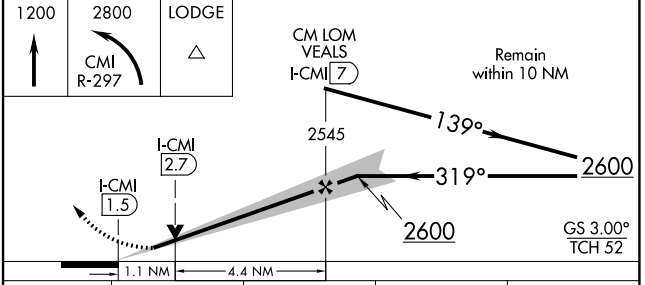
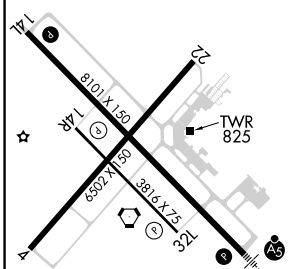
**▲** For inop ALS, increase S-LOC 32R Cat C and D visibility to RVR 6000.  
**ASR** \*RVR 1800 authorized with use of FD or AP or HUD to DA.

**MALSR**  
**AS** MISSED APPROACH: Climb to 1200 then climbing left turn to 2800 on CMI VORTAC R-297 to LODGE INT/CMI VORTAC 13.2 DME and hold.

ATIS <b>124.85</b>	CHAMPAIGN APP CON ★ <b>121.35 285.65</b> (319°-138°) <b>132.85 290.225</b> (139°-318°)	CHAMPAIGN TOWER ★ <b>120.4 (CTAF) 229.4</b>	GND CON <b>121.8</b>	CLNC DEL <b>128.75</b>	UNICOM <b>122.95</b>
-----------------------	--	--	-------------------------	---------------------------	-------------------------



ELEV <b>755</b>	<b>D</b>	TDZE <b>750</b>
HIRL Rwy 14L-32R		
MIRL Rwy 4-22		
MIRL Rwy 14R-32L		



CATEGORY	A	B	C	D
S-ILS 32R *	950/24 200 (200-½)			
S-LOC 32R	1160/24	410 (500-½)	1160/40	410 (500-¾)
<b>C</b> CIRCLING	1240-1	485 (500-1)	1500-2¼ 745 (800-2¼)	1500-2½ 745 (800-2½)

CHAMPAIGN/URBANA, ILLINOIS  
 Amdt 14A 25JAN24

UNIVERSITY OF ILLINOIS/WILLARD (CMI)  
 ILS or LOC RWY 32R  
 40°02'N-88°17'W

EC-3, 28 NOV 2024 to 26 DEC 2024

EC-3, 28 NOV 2024 to 26 DEC 2024