

WAAS CH <b>61021</b> <b>W23A</b>	APP CRS <b>228°</b>	Rwy Idg TDZE Apt Elev	<b>3439</b> <b>874</b> <b>874</b>
--	------------------------	-----------------------------	---

# RNAV (GPS) RWY 23

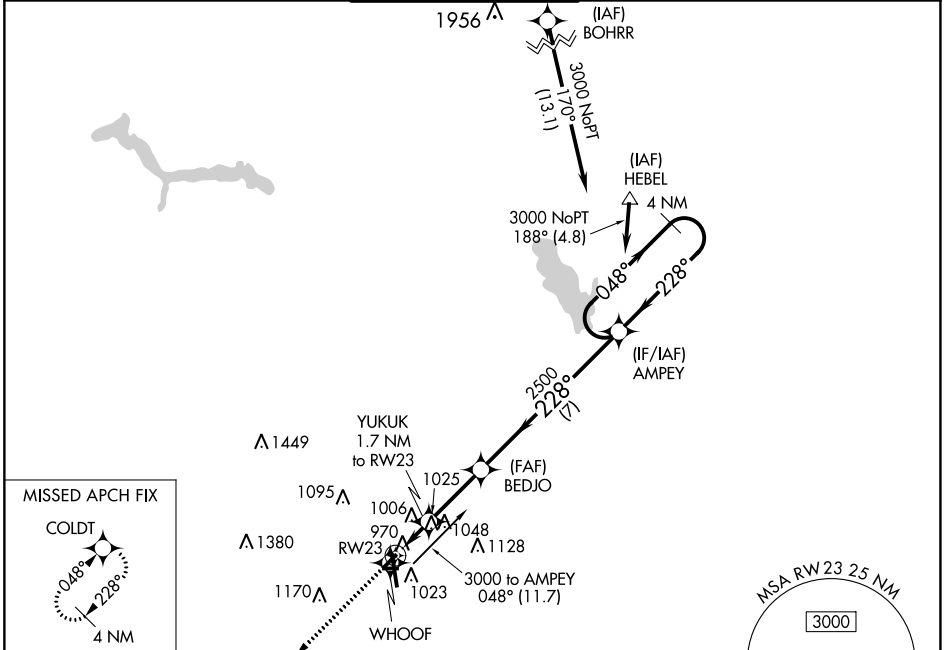
KALAMAZOO/BATTLE CREEK INTL (AZO)

RNP APCH

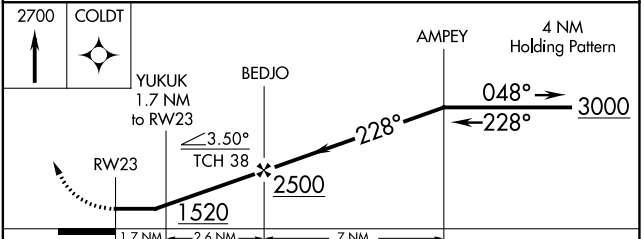
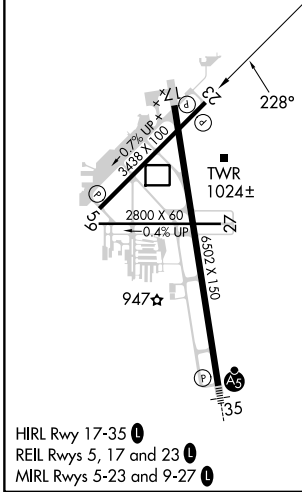
⚠ Circling Rwy 5, 9, 17, 23, 27 NA at night. Rwy 23 helicopter visibility reduction below 1 SM NA. Straight-in Rwy 23 NA at night.

MISSED APPROACH: Climb to 2700 direct COLDT and hold.

ATIS <b>127.25</b>	GREAT LAKES APP CON * <b>121.2 239.25</b>	KALAMAZOO TOWER* <b>118.3</b> (CTAF) <b>0 257.875</b>	GND CON <b>121.9</b>	CLNC DEL <b>121.75</b>	UNICOM <b>122.95</b>
-----------------------	--	--	-------------------------	---------------------------	-------------------------



ELEV <b>874</b>	<b>D</b>	TDZE <b>874</b>
-----------------	----------	-----------------



CATEGORY	A	B	C	D
LP MDA	1220-1	346 (400-1)		NA
LNAV MDA	1280-1	406 (500-1)	1280-1 <sup>1</sup> / <sub>8</sub> 406 (500-1 <sup>1</sup> / <sub>8</sub> )	NA
<b>C</b> CIRCLING	1380-1	506 (600-1)	1480-1 <sup>3</sup> / <sub>4</sub> 606 (700-1 <sup>3</sup> / <sub>4</sub> )	NA

EC-1, 28 NOV 2024 to 26 DEC 2024

EC-1, 28 NOV 2024 to 26 DEC 2024