


WAAS CH 50310 W01A	APP CRS 007°	Rwy Idg TDZE Apt Elev	9001 685 690
--	------------------------	-----------------------------	---

RNAV (GPS) RWY 1

ALPENA COUNTY RGNL (APN)

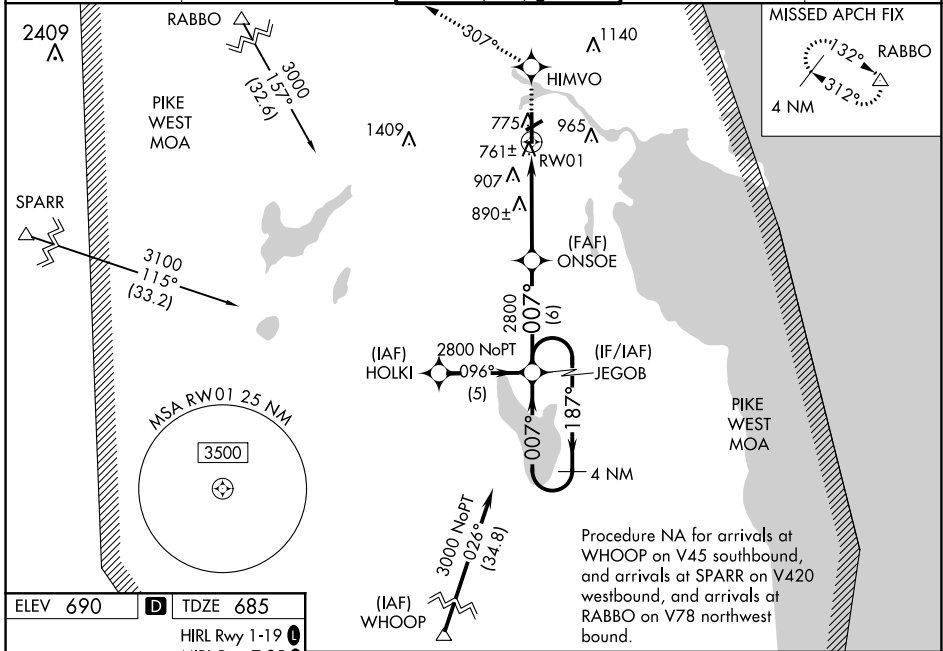
RNP APCH.

⚠ For uncompensated Baro-VNAV systems, LNAV/VNAV NA below -16°C or above 48°C. When local altimeter setting not received, use Rogers City altimeter setting; increase all LPV DAs to 1029 feet, LNAV/VNAV DAs to 1084 feet and all MDAs 60 feet; increase LPV all Cats, LNAV/VNAV all Cats and LNAV Cats C and D visibility ½ SM. Baro-VNAV and VDP NA when using Roger City altimeter setting. For inop ALS, increase LPV all Cats visibility to 1 SM.

MALSR 

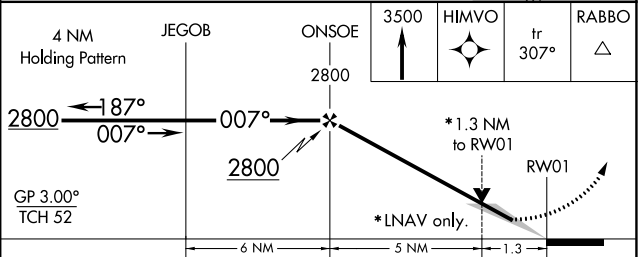
MISSED APPROACH: Climb to 3500 direct HIMVO and on track 307° to RABBO and hold.

ATIS 120.675	ALPENA APP CON * 327.05	ALPENA TOWER * 121.35 (CTAF) 0 318.1	GND CON 121.9 275.8	UNICOM 122.95
------------------------	-----------------------------------	--	-------------------------------	-------------------------



ELEV 690 **D** TDZE 685

HIRL Rwy 1-19 **Ⓛ**
MIRL Rwy 7-25 **Ⓛ**
REIL Rwys 7, 19 and 25 **Ⓛ**



CATEGORY	A	B	C	D
LPV DA		974-½	289 (300-½)	
LNAV/VNAV DA		1029-¾	344 (400-¾)	
LNAV MDA	1160-½	475 (500-½)	1160-¾ 475 (500-¾)	1160-1 475 (500-1)
C CIRCLING	1160-1	470 (500-1)	1220-1½ 530 (600-1½)	1280-2 590 (600-2)

EC-1, 28 NOV 2024 to 26 DEC 2024

EC-1, 28 NOV 2024 to 26 DEC 2024