

LOC I-OSH <b>110.5</b>	APP CRS <b>004°</b>	Rwy Idg <b>8002</b>	TDZE <b>808</b>
		Apt Elev <b>808</b>	

# ILS or LOC RWY 36

WITTMAN RGNL (OSH)

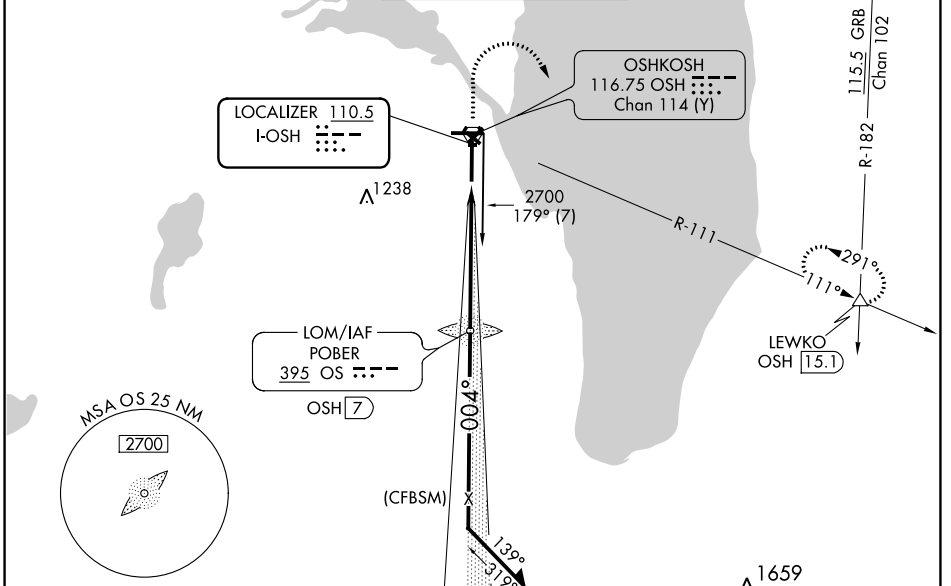
**⚠** When local altimeter setting not received, use Fond Du Lac altimeter setting and increase DA 31 feet and all MDA 40 feet; increase S-LOC 36 Cat C/D and Circling Cat C/D visibilities ¼ mile. For inop MALSRS when using Fond Du Lac altimeter setting, increase S-LOC 36 Cat C/D visibility to 1½ mile. Circling to Rwy 5, 23, and 31 NA at night.  
 \* RVR 1800 authorized with the use of FD or AP or HUD to DA, NA when using Fond Du Lac altimeter setting.

MALSRS

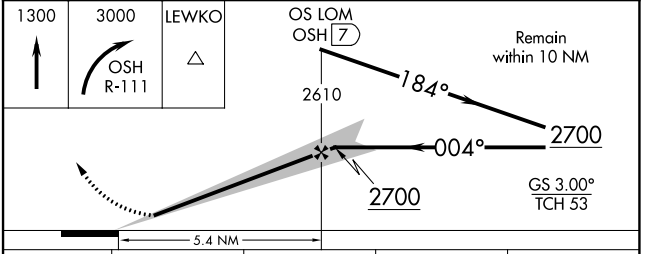
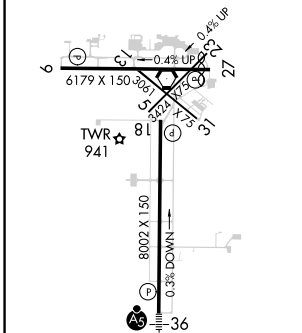


**MISSED APPROACH:** Climb to 1300 then climbing right turn to 3000 on OSH R-111 to LEWKO INT/OSH 15 DME and hold.

ATIS <b>125.9</b>	MILWAUKEE APP CON <b>127.0 263.075</b>	OSHKOSH TOWER ★ <b>118.5 (CTAF) 290.9</b>	GND CON <b>132.3</b>	UNICOM <b>122.95</b>
----------------------	---	--	-------------------------	-------------------------



ELEV <b>808</b>	<b>D</b>	TDZE <b>808</b>
-----------------	----------	-----------------



CATEGORY	A	B	C	D
S-ILS 36 *	1008/24 200 (200-½)			
S-LOC 36	1340/24	532 (600-½)	1340/55	532 (600-1)
<input checked="" type="checkbox"/> CIRCLING	1340-1	532 (600-1)	1360-1½ 552 (600-½)	1440-2 632 (700-2)

OSHKOSH, WISCONSIN  
Amdt 7C 29MAR18

43°59'N-88°33'W

# WITTMAN RGNL (OSH) ILS or LOC RWY 36

EC-3, 28 NOV 2024 to 26 DEC 2024

EC-3, 28 NOV 2024 to 26 DEC 2024