

LOM OS <b>395</b>	APP CRS <b>003°</b>	Rwy Idg <b>8002</b>
		TDZE <b>808</b>
		Apt Elev <b>808</b>

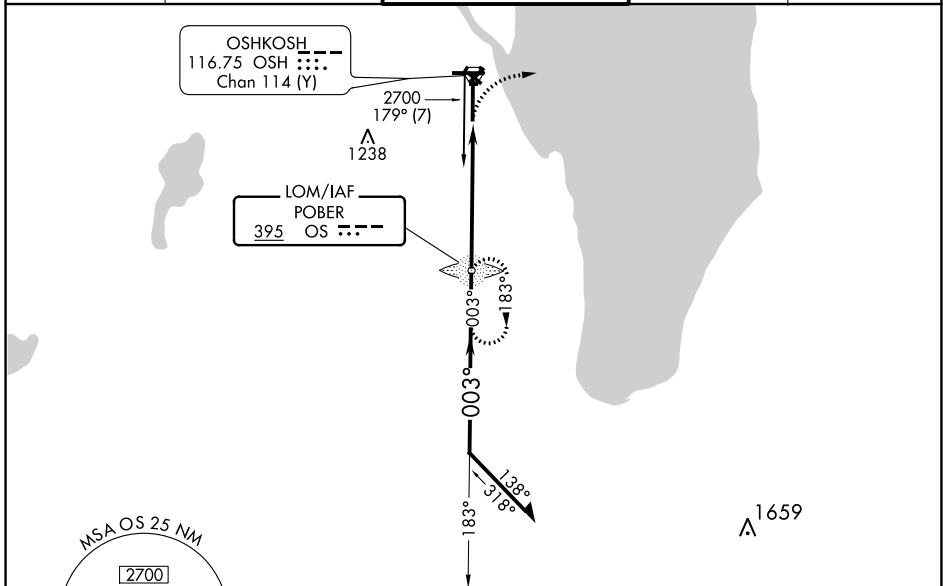
# NDB RWY 36

WITTMAN RGNL (OSH)

**NA** When local altimeter setting not received, use Fond Du Lac altimeter setting and increase all MDA 40 feet; increase S-36 Cat C/D and Circling Cat C visibilities 1/8 mile, increase Circling Cat D visibility 1/4 mile. For inop MALSRS, increase S-36 Cat D visibility to 1 1/8 mile. For inop MALSRS when using Fond Du Lac altimeter setting, increase S-36 Cat D visibility to 2 miles. Circling to Rwy 5, 23, and 31 NA at night.

**MALSRS**  
MISSED APPROACH: Climbing right turn to 3000 on heading 090° then right turn direct POBER LOM and hold.

ATIS <b>125.9</b>	MILWAUKEE APP CON <b>127.0 263.075</b>	OSHKOSH TOWER ★ <b>118.5 (CTAF) 290.9</b>	GND CON <b>132.3</b>	UNICOM <b>122.95</b>
----------------------	---	--	-------------------------	-------------------------

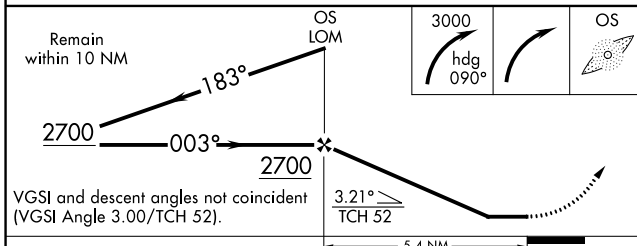
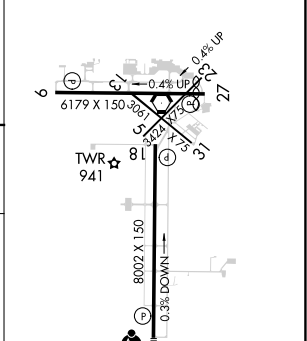


EC-3, 28 NOV 2024 to 26 DEC 2024

EC-3, 28 NOV 2024 to 26 DEC 2024



ELEV 808	<b>D</b>	TDZE 808
----------	----------	----------



CATEGORY	A	B	C	D
S-36	1460/40	652 (700-3/4)	1460-1 3/8	652 (700-1 1/8)
<b>C</b> CIRCLING	1460-1	652 (700-1)	1460-1 7/8	1460-2
			652 (700-1 7/8)	652 (700-2)

REIL Rwy 18 and 27  
HIRL Rwy 9-27 and 18-36

FAF to MAP 5.4 NM

Knots	60	90	120	150	180
Min:Sec	5:24	3:36	2:42	2:10	1:48