

JACKSONVILLE, NORTH CAROLINA

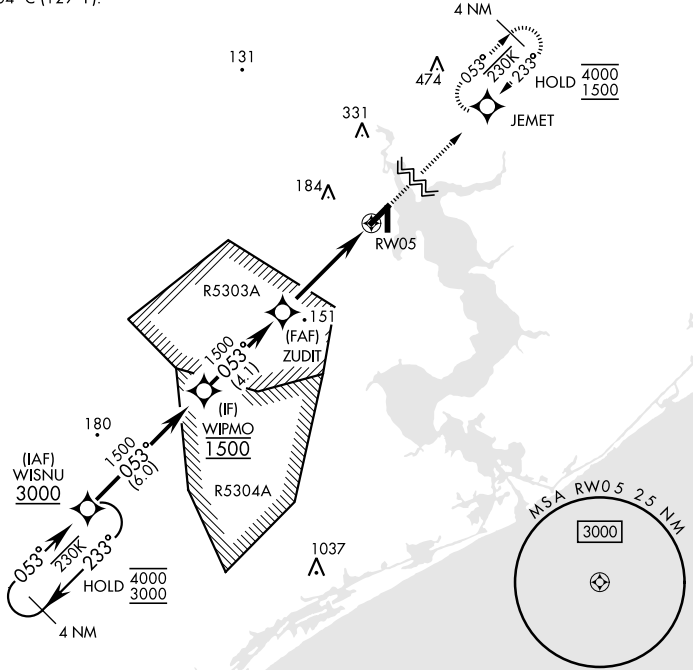
RNAV (GPS) RWY 5

WAAS Chan 77243 W05A	APCH CRS 053°	Rwy Idg TDZE 26 Arprt Elev 26	5125	[USN]	NEW RIVER MCAS (MC CUTCHEON FLD) (KNCA)
--	-------------------------	---	------	-------	---

RNP APCH	MISSED APPROACH: Climb to 1500 direct JEMET and hold.
RADAR required	

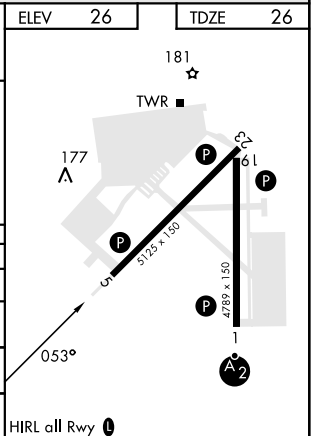
ATIS ★ 288.325	CHERRY POINT APP CON 119.35 377.175	TOWER ★ 134.95(CTAF) 0★ 360.2	GND CON 121.8 254.275	CLNC DEL 269.25	ASR/PAR
--------------------------	---	---	---------------------------------	---------------------------	---------

For uncompensated Baro-VNAV systems, LNAV/VNAV NA below -15°C (5°F) or above 54°C (129°F).



EMERG SAFE ALT 100 NM 3400

WISNU		VGSI and descent angles not coincident (VGSI Angle 3.00/TCH 37)		1500	JEMET	ELEV 26	TDZE 26
WIPMO		ZUDIT		1500			
GP 3.00° TCH 50							
CATEGORY	A	B	C	D			
LPV DA	226- $\frac{3}{4}$		200	(200- $\frac{3}{4}$)			
LNAV/VNAV DA	308- $\frac{7}{8}$ 282 (300- $\frac{7}{8}$)	319- $\frac{7}{8}$ 293 (300- $\frac{7}{8}$)	327- $\frac{7}{8}$ 301 (400- $\frac{7}{8}$)	338- $\frac{7}{8}$ 312 (400- $\frac{7}{8}$)			
LNAV MDA	440-1	414 (500-1)	440-1 $\frac{1}{8}$	414 (500-1 $\frac{1}{8}$)			
CIRCLING	500-1	474 (500-1)	700-2 674 (700-2)	700-2 $\frac{1}{4}$ 674 (700-2 $\frac{1}{4}$)			



JACKSONVILLE, NORTH CAROLINA

34°43'N-77°26'W

NEW RIVER MCAS (MC CUTCHEON FLD) (KNCA)

Amdt 8 28DEC23

RNAV (GPS) RWY 5

SE-2, 28 NOV 2024 TO 26 DEC 2024

SE-2, 28 NOV 2024 TO 26 DEC 2024