

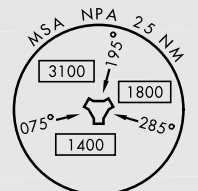
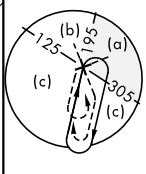
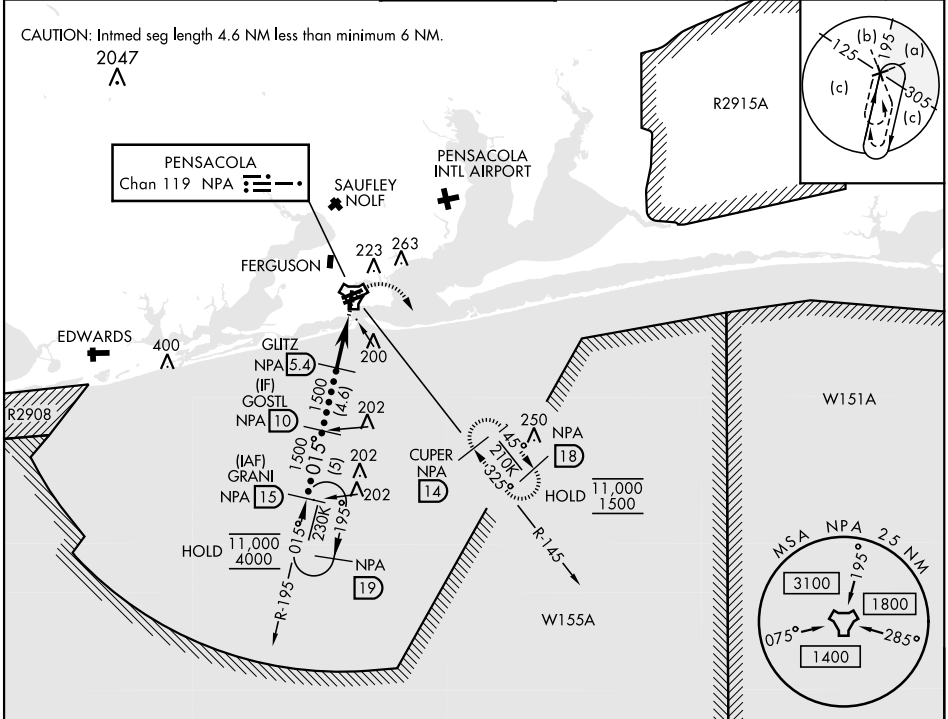
PENSACOLA, FLORIDA

HI-TACAN Z RWY 1

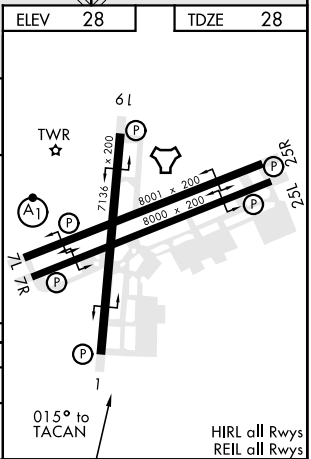
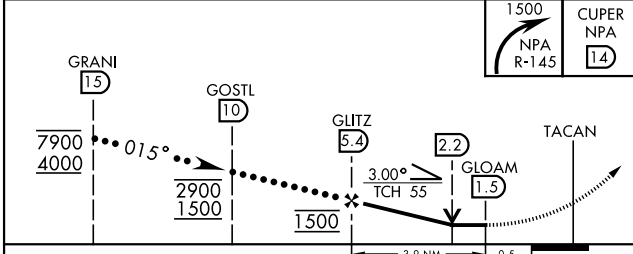
TACAN NPA Chan 119	APCH CRS 015°	Rwy Idg 7136 TDZE 28 Arprt Elev 28	AL-736 [USN]	PENSACOLA NAS (FORREST SHERMAN FLD) (KNPA)
-----------------------	------------------	---	--------------	--

RADAR required. MISSED APPROACH: Climbing right turn to 1500 via NPA TACAN R-145 to CUPER and hold.

ATIS 124.35 266.8	PENSACOLA APP CON 120.65 270.8	SHERMAN TOWER 120.7 340.2	GND CON 121.7 336.4	CLNC DEL 134.1 268.7	ASR/ PAR
----------------------	-----------------------------------	------------------------------	------------------------	-------------------------	-------------



EMERG SAFE ALT 100 NM 3100



CATEGORY	C	D	E
S-1	460-1¼	432	(500-1¼)
CIRCLING	540-1½ 512 (600-1½)	580-2	552 (600-2)

PENSACOLA, FLORIDA 30°21'N-87°19'W PENSACOLA NAS (FORREST SHERMAN FLD) (KNPA)

Orig 02DEC21

HI-TACAN Z RWY 1

SE-3, 28 NOV 2024 to 26 DEC 2024

SE-3, 28 NOV 2024 to 26 DEC 2024