

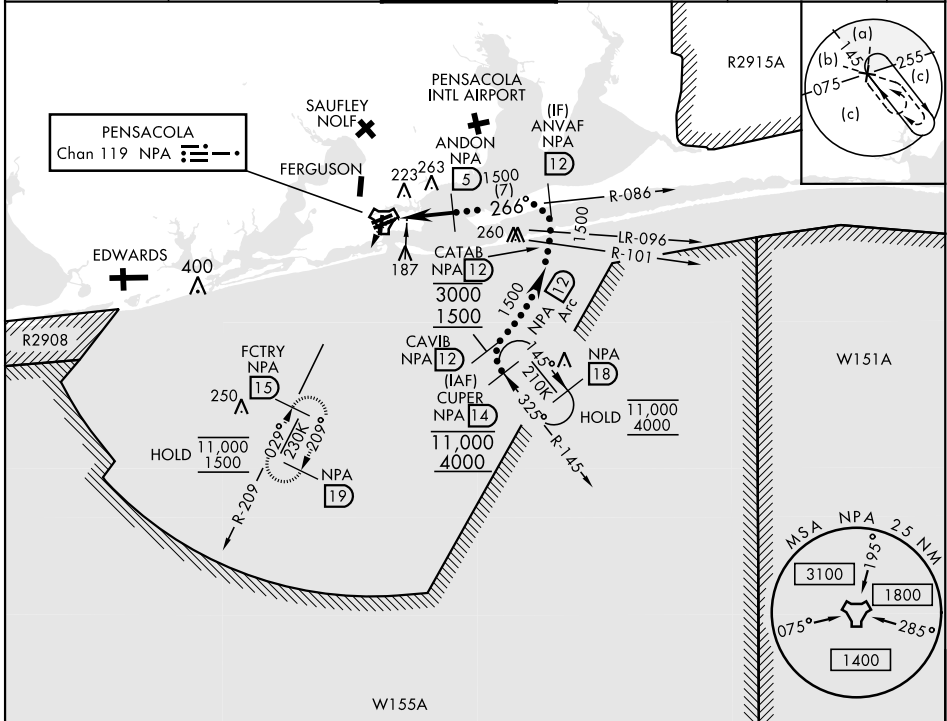
HI-TACAN Z RWY 25L

TACAN NPA Chan 119	APCH CRS 266°	Rwy Idg 8000 TDZE 22 Arprt Elev 28	AL-736 [USN] PENSACOLA NAS (FORREST SHERMAN FLD) (KNPA)
-----------------------	------------------	---	---

RADAR required.

MISSED APPROACH: Climbing left turn to 1500 via NPA TACAN R-209 to FCTRY and hold.

ATIS 124.35 266.8	PENSACOLA APP CON 120.65 270.8	SHERMAN TOWER 120.7 340.2	GND CON 121.7 336.4	CLNC DEL 134.1 268.7	ASR/ PAR
----------------------	-----------------------------------	------------------------------	------------------------	-------------------------	-------------

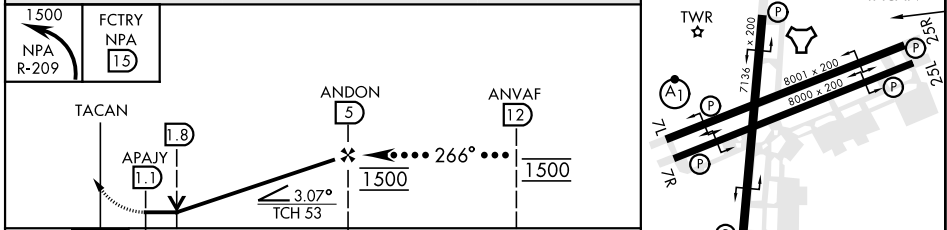


SE-3, 28 NOV 2024 to 26 DEC 2024

SE-3, 28 NOV 2024 to 26 DEC 2024

ELEV 28	TDZE 22
---------	---------

EMERG SAFE ALT 100 NM 3100



CATEGORY	C	D	E
S-25L	440-1½	418 (500-1½)	
CIRCLING	540-1½ 512 (600-1½)	580-2	552 (600-2)

HIRL all Rwys
REIL all Rwys

HI-TACAN Z RWY 25L