

TACAN Y RWY 7R

TACAN NPA Chan 119	APCH CRS 059°	Rwy Idg 8001	TDZE 23	Arprt Elev 28
-----------------------	------------------	-----------------	------------	------------------

AL-736 [USN]

PENSACOLA NAS (FORREST SHERMAN FLD) (KNPA)

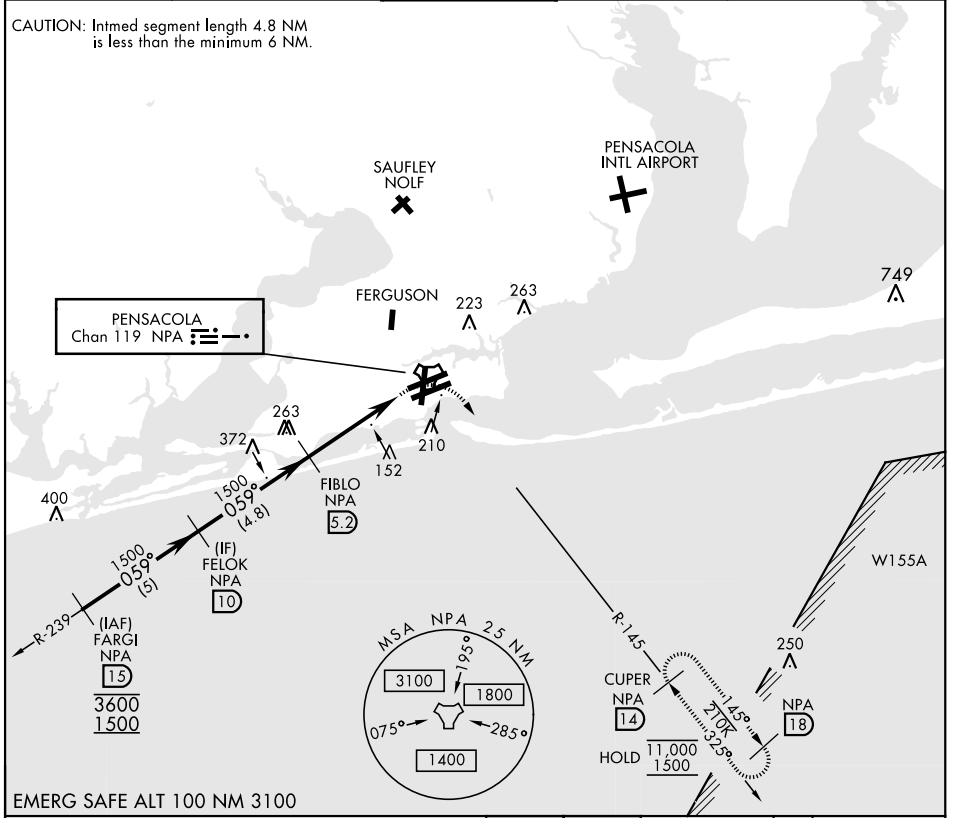
RADAR required.



MISSED APPROACH: Climbing right turn to 1500 via NPA TACAN R-145 to CUPER and hold.

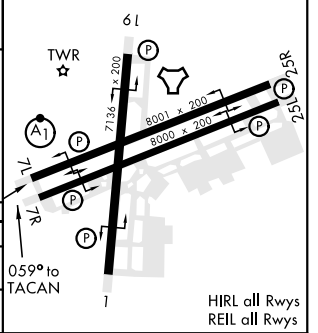
ATIS 124.35 266.8	PENSACOLA APP CON 120.65 270.8	SHERMAN TOWER 120.7 340.2	GND CON 121.7 336.4	CLNC DEL 134.1 268.7	ASR/ PAR
----------------------	-----------------------------------	------------------------------	------------------------	-------------------------	----------

CAUTION: Intmed segment length 4.8 NM is less than the minimum 6 NM.



EMERG SAFE ALT 100 NM 3100

	FELOK 10		FIBLO 5.2		TACAN		ELEV 28		TDZE 23	
	1500		1500		1500		1500		1500	
	059°		3.05°		TCH 55		3.9 NM		0.5	
CATEGORY	A	B	C	D	E					
S-7R	440-1	415 (500-1)	440-½	415 (500-½)						
CIRCLING	520-1	492 (500-1)	540-1½	512 (600-1½)	580-2	552	(600-2)			



PENSACOLA, FLORIDA 30°21'N-87°19'W PENSACOLA NAS (FORREST SHERMAN FLD) (KNPA)

Orig 02DEC21

TACAN Y RWY 7R

SE-3, 28 NOV 2024 to 26 DEC 2024

SE-3, 28 NOV 2024 to 26 DEC 2024